

# TOWN OF AURORA LIBRARY SQUARE + CHURCH STREET SCHOOL HOUSE ADDITION

TOWN COUNCIL PREVIEW

FEBRUARY 12th, 2019

David Leinster, Partner, The Planning Partnership  
Thomas Nemeskeri, Architect, OAA, RAW Design



CHURCH STREET  
SCHOOL HOUSE  
ADDITION

TOWN OF AURORA

PRIME CONSULTANT  
THE PLANNING PARTNERSHIP

LIBRARY  
SQUARE

ARCHITECT  
RAW Design Inc.

HERITAGE  
ERA Architects

THEATRE, A/V  
MCLD

COSTING  
Turner & Townsend

STRUCTURAL  
Blackwell Engineers

ENERGY MODELLING  
Footprint

MECH. + ELEC.  
Smith + Andersen Eng.

ACOUSTICS  
Novus Environmental

BUILDING ENVELOPE  
Entuitive Engineers

CODE  
Matteo Gilfillan & Assoc.

LANDSCAPE  
THE PLANNING PARTNERSHIP

ELECTRICAL  
DPM

WATER + RINK  
Custom Ice Rinks

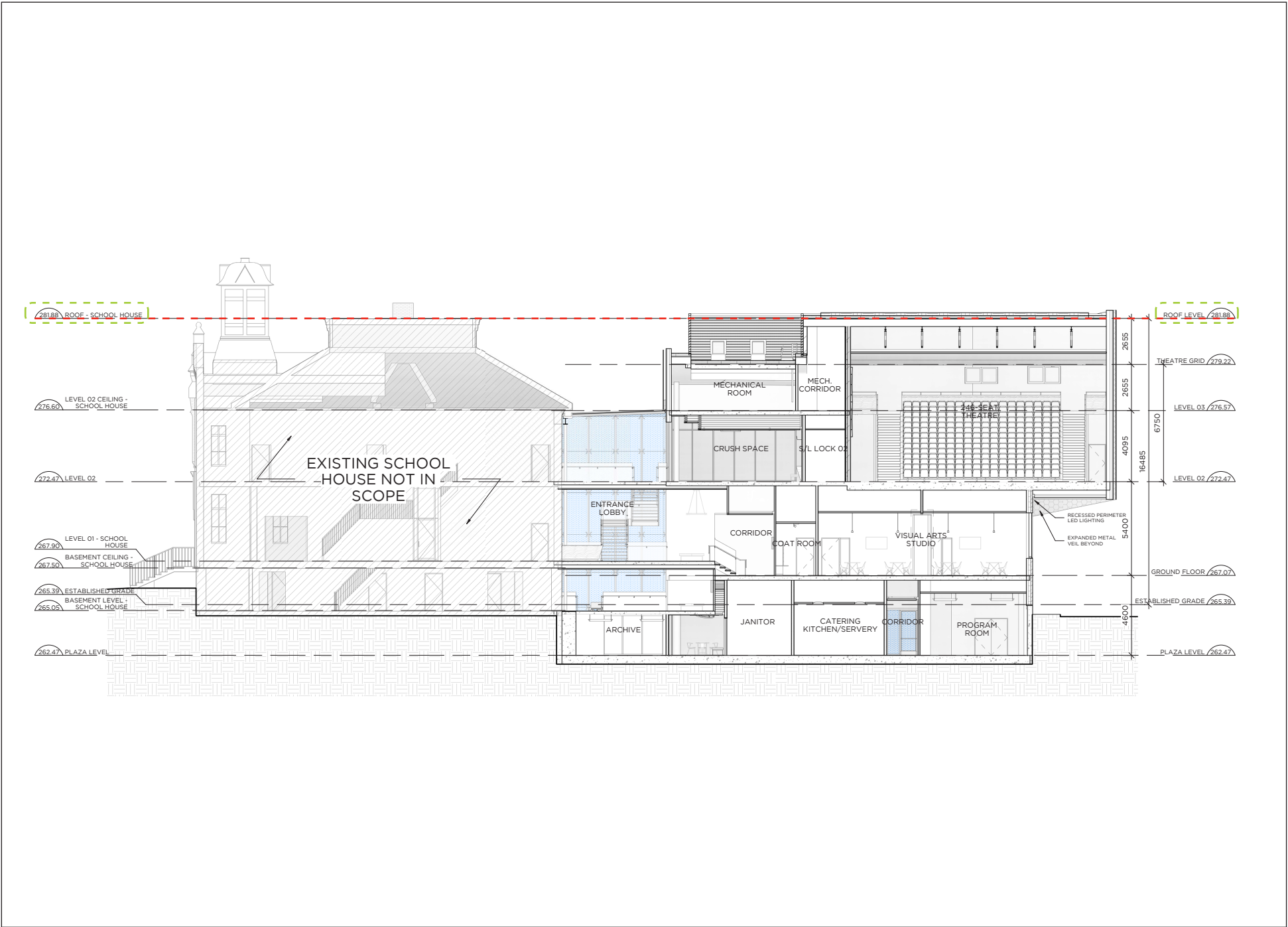
CIVIL ENG.  
SCS



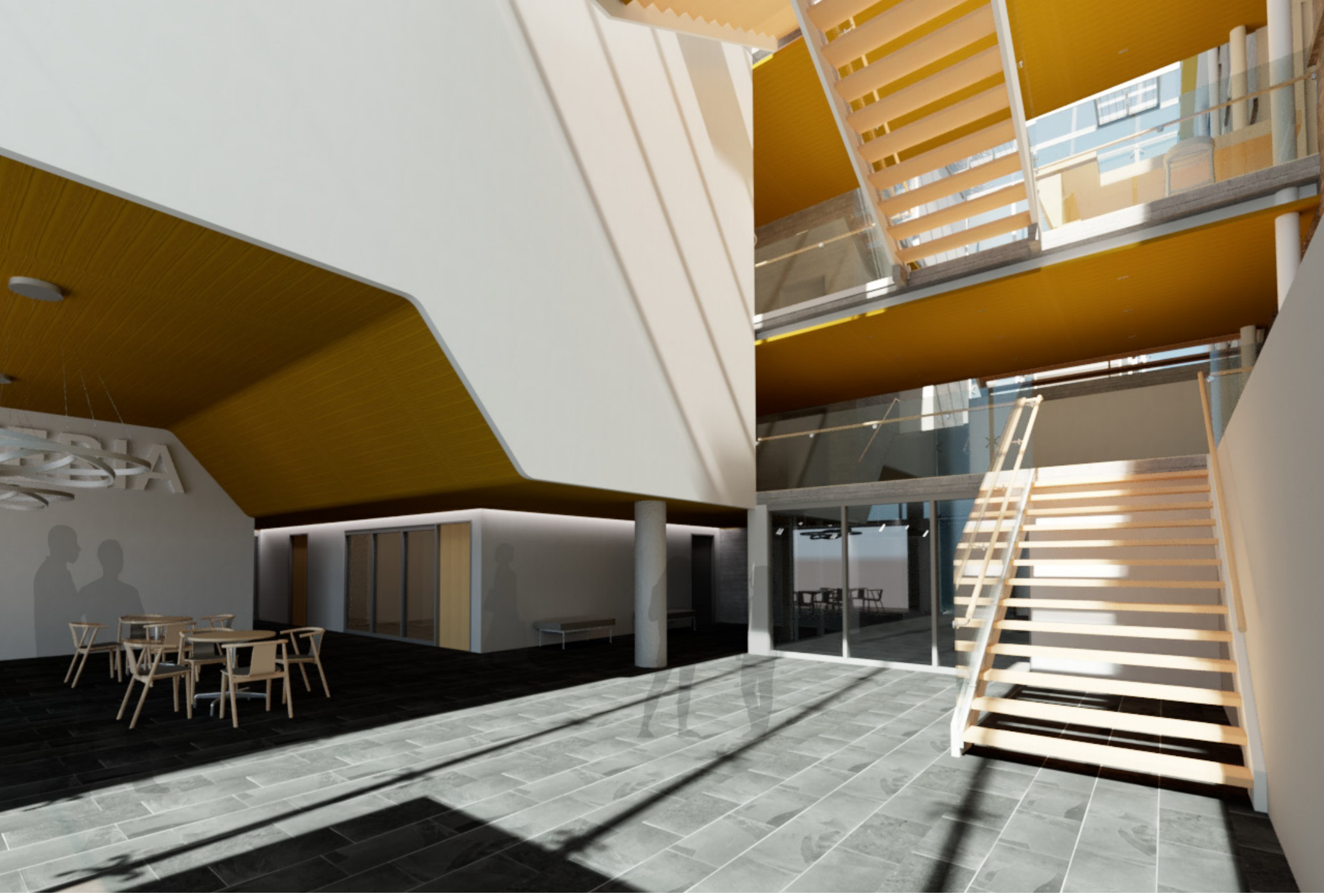
**CURRENT CONCEPT**



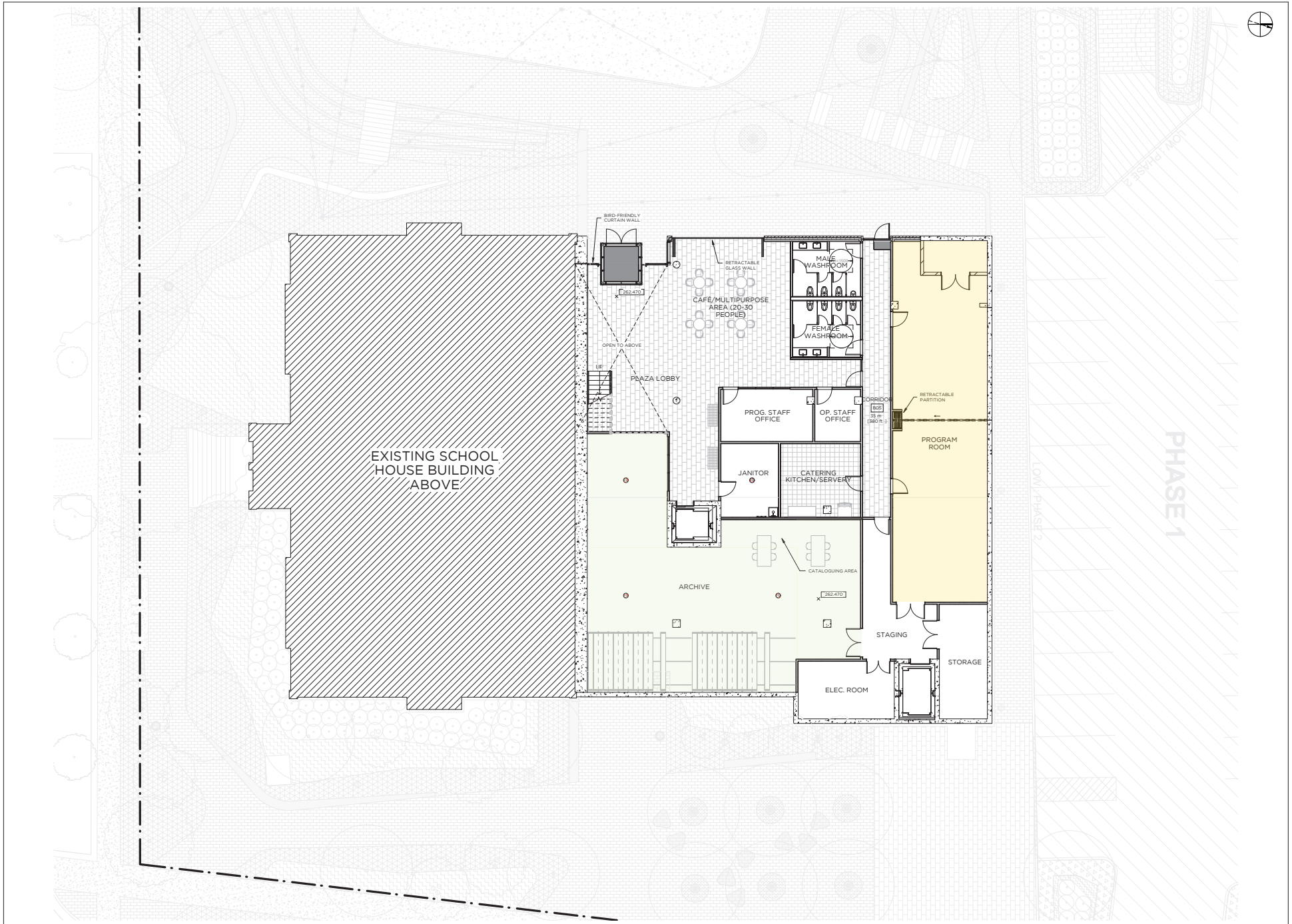
VIEW FROM LIBRARY SQUARE



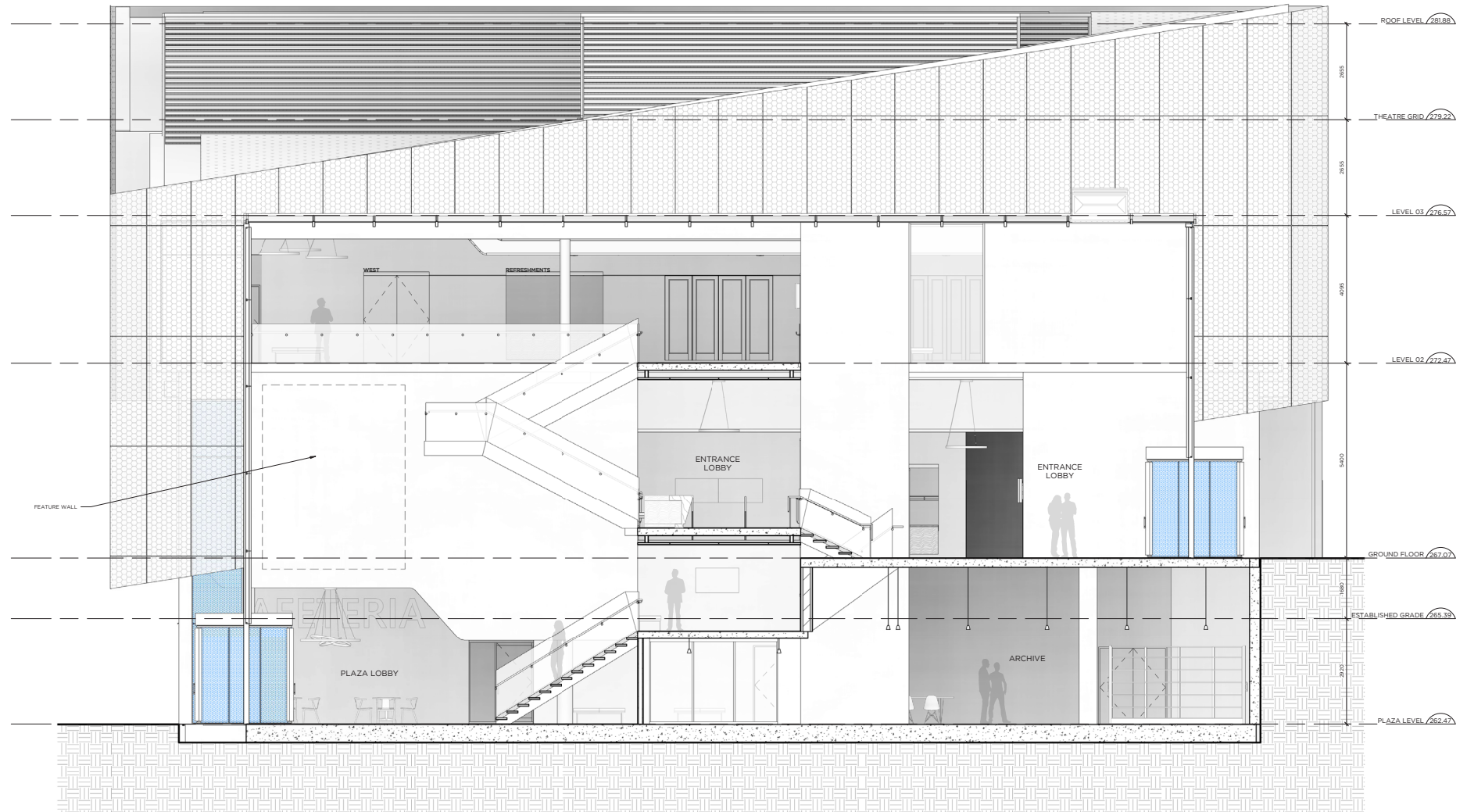
**NORTH-SOUTH BUILDING SECTION**



**PLAZA LEVEL ENTRANCE**

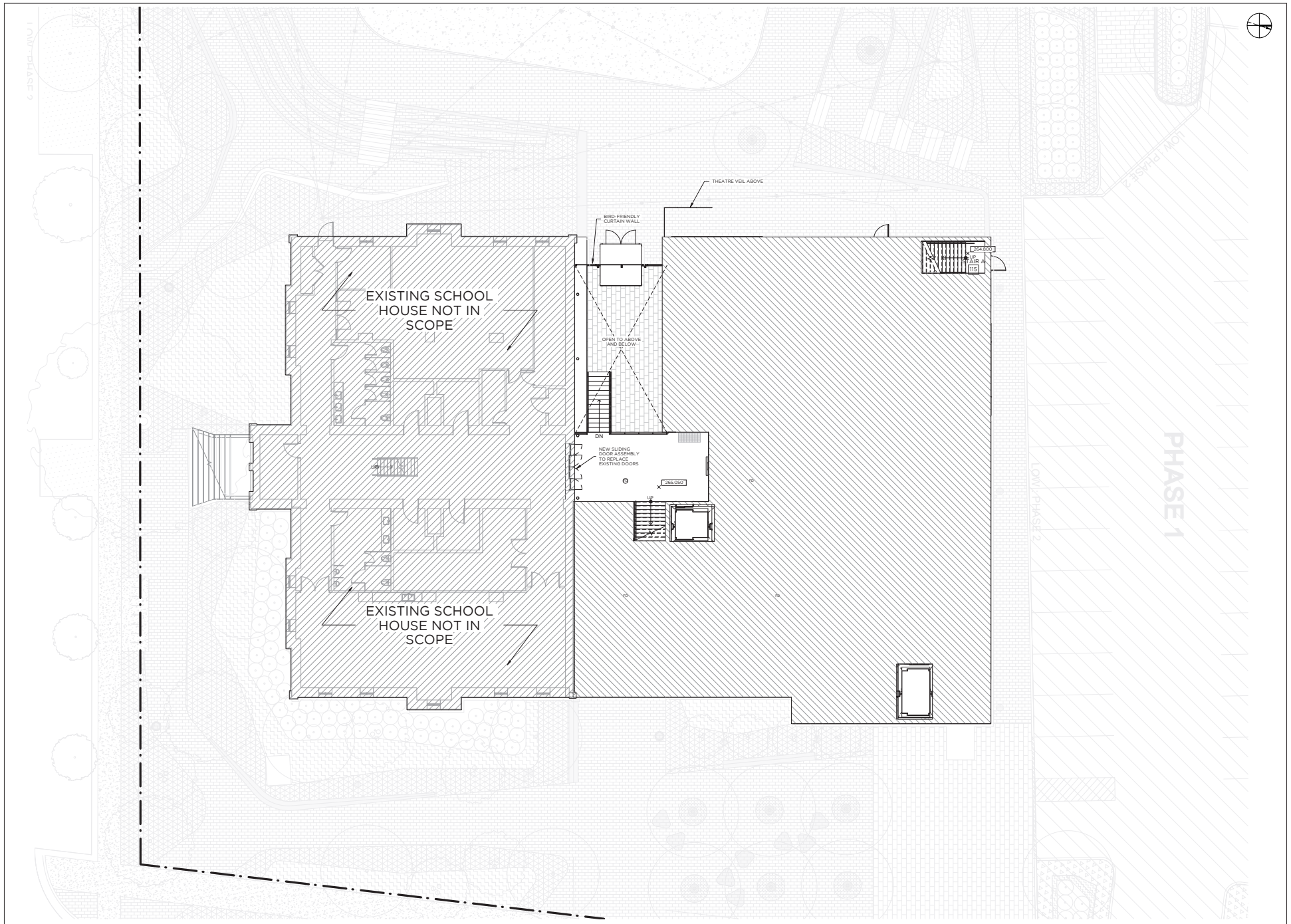


PLAZA LEVEL PLAN



**SECTION THROUGH ATRIUM**





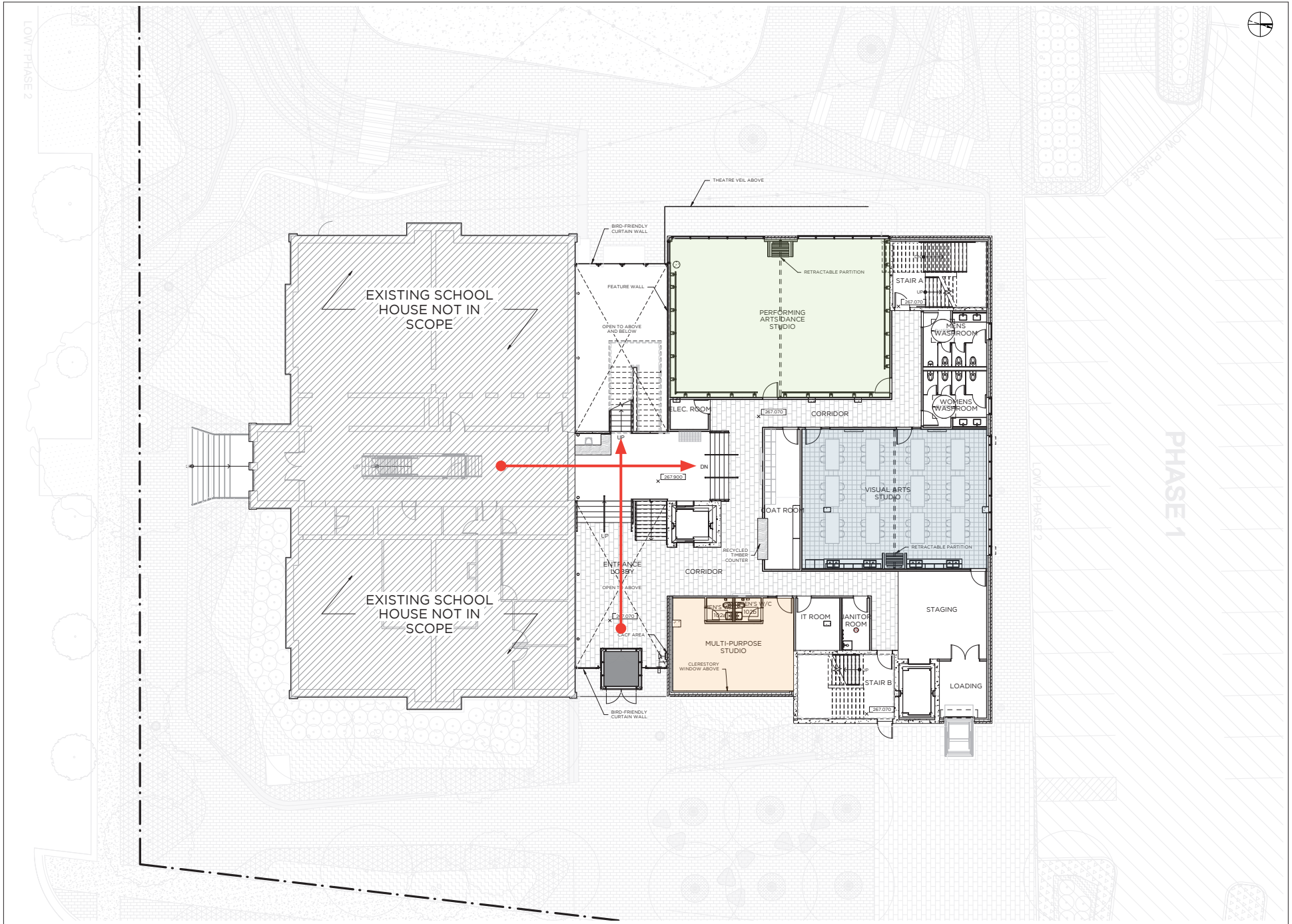
**SCHOOL HOUSE BASEMENT PLAN**



VICTORIA STREET ENTRANCE



RECEPTION AREA



**GROUND LEVEL PLAN**

# AMENITIES AND FEATURES

## PROGRAM ROOM

### SAMPLE USES:

- + Camps
- + Meetings / Seminars
- + Potential dedicated space

## PERFORMING ARTS STUDIO

### FEATURES:

- + Sprung Floor
- + Mirrors
- + Professional sound system
- + Retractable Wall

### SAMPLE USES:

- + Dance performances / rehearsals
- + Fitness classes
- + Theatrical performances / rehearsals
- + Music Performances
- + Courses
- + Camps

## MULTI-PURPOSE STUDIO

### SAMPLE USES:

- + Small Meetings
- + Prep. Classes
- + Rehearsal Space

## MULTI-PURPOSE VISUAL ARTS ROOM

### FEATURES:

- + Seating for 48 with tables + chairs
- + Sinks
- + Storage cabinets
- + Retractable wall

### SAMPLE USES:

- + Visual Arts
- + Crafts
- + Design
- + Language classes
- + Seminars
- + Media / fiber arts

## PERFORMANCE HALL

### FEATURES:

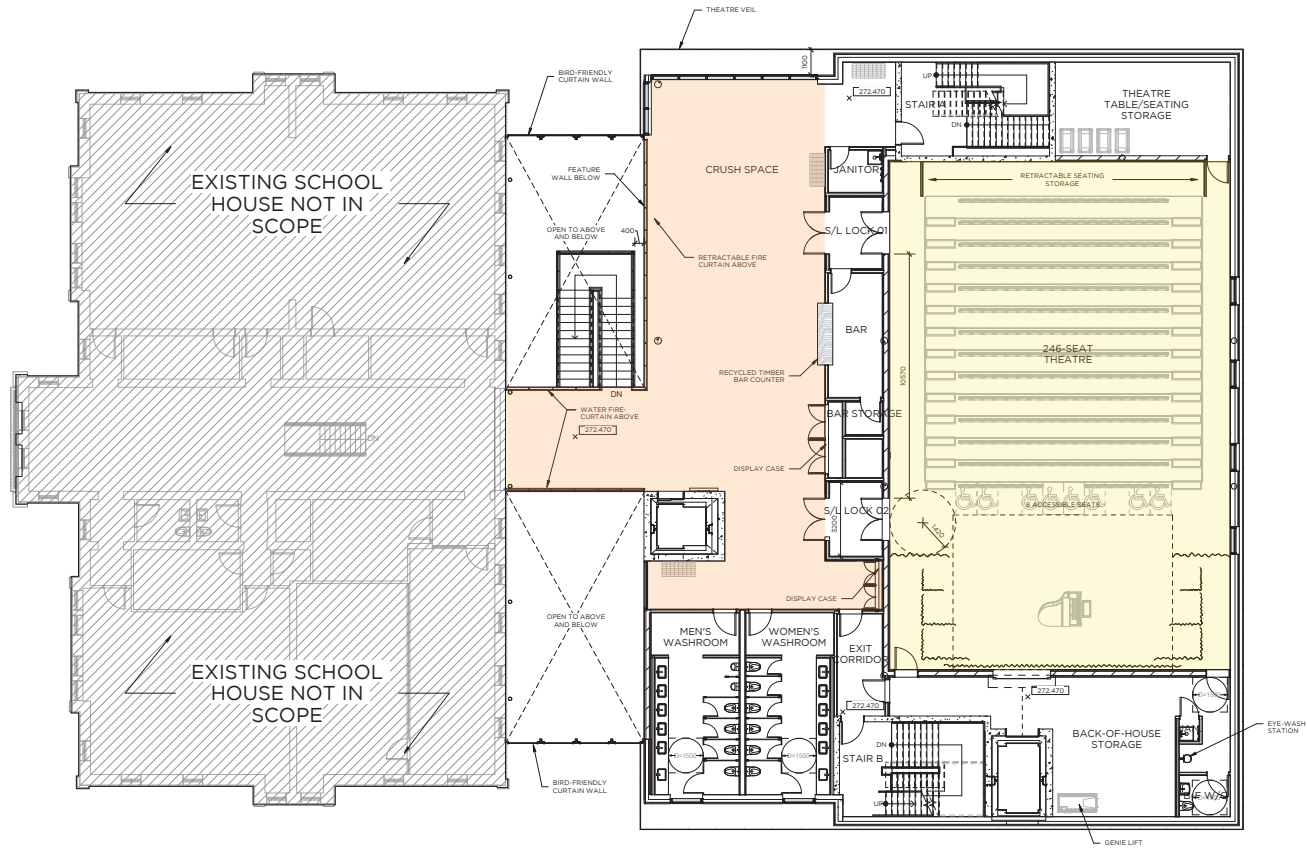
- + Retractable Seating
- + Sprung Floor
- + Professional lighting and audio equipment
- + A/V Projector Screen
- + Seating for 250 in Theatre format, or 192 in Banquet format, with tables and chairs.

### SAMPLE USES:

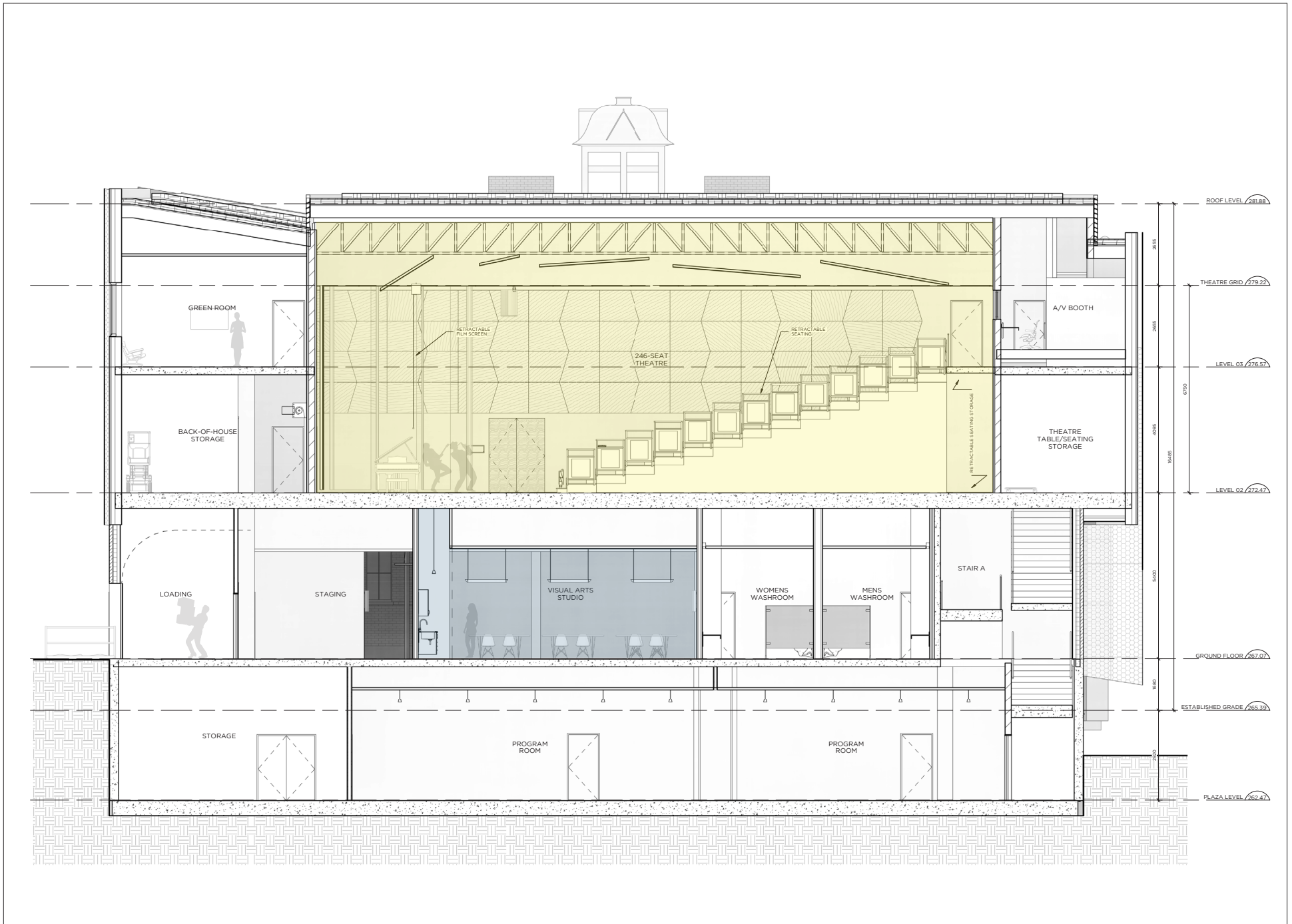
- + Live Theatrical Performances
- + Concerts, comedy shows, variety acts
- + Movie Screenings
- + Presentations / Ceremonies
- + Recitals / Rehearsals
- + Auditions
- + Acting Lessons
- + Workshops / Lectures
- + Panel Discussions / Debates
- + Dinner Theatre
- + Fairs
- + Banquets
- + Tradeshows



VIEW INTO ATRIUM AND CRUSH SPACE



PERFORMANCE HALL LEVEL PLAN - 246 SEATS

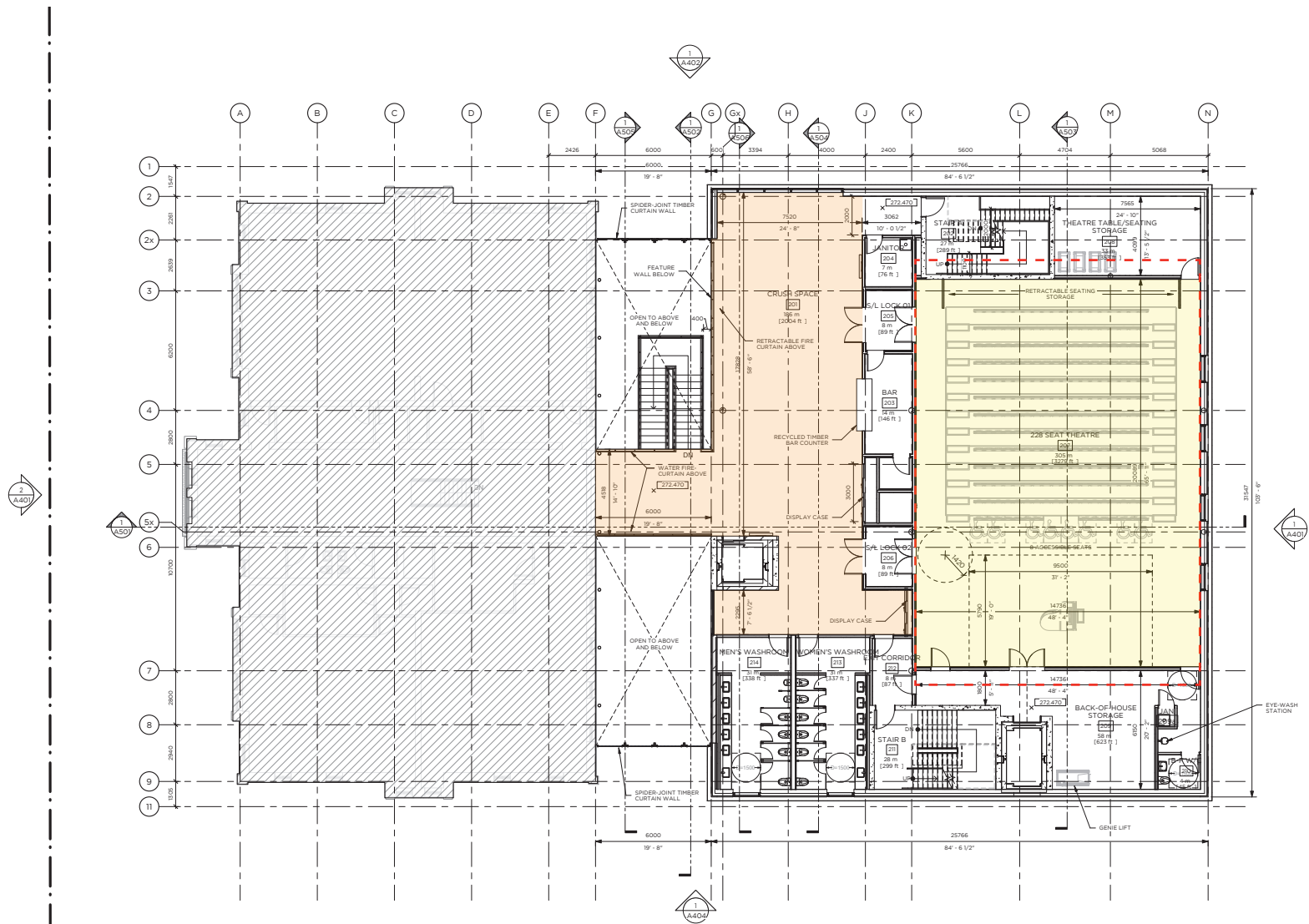


**EAST-WEST BUILDING SECTION**





**PERFORMANCE HALL - THEATRE CONFIGURATION**

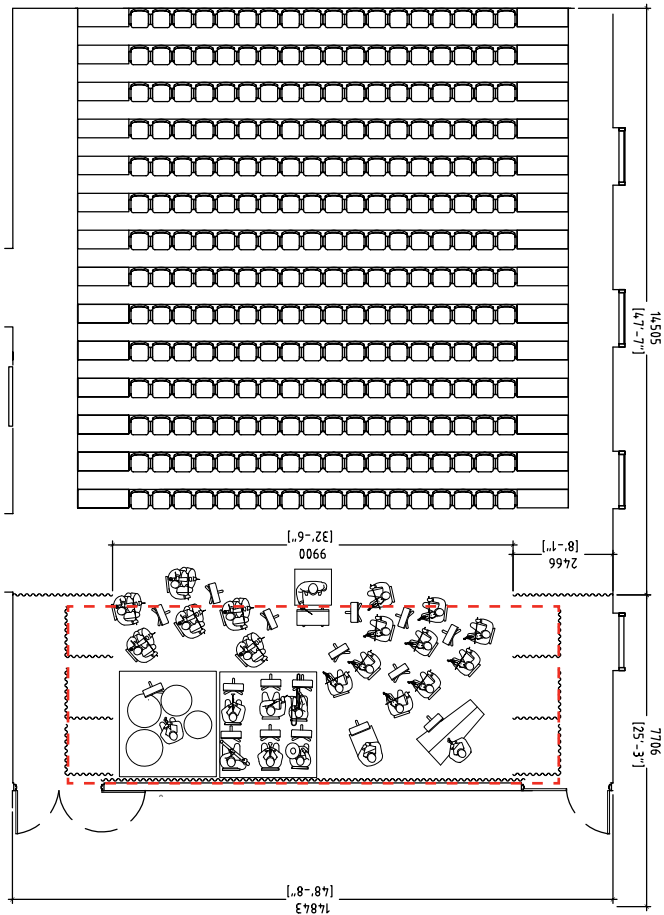


PERFORMANCE HALL LEVEL PLAN - 228 SEATS

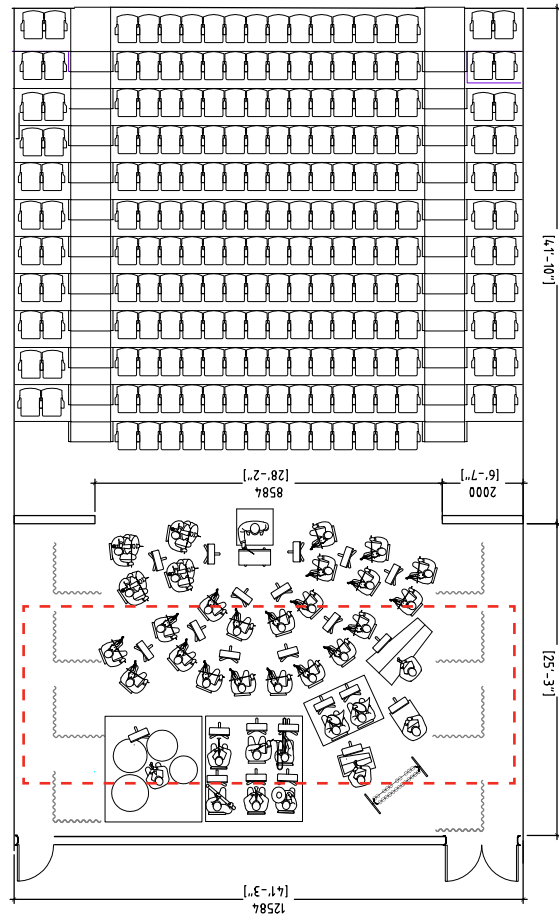


LIBRARY SQUARE  
**TOWN OF AURORA**  
 FEBRUARY 12, 2019

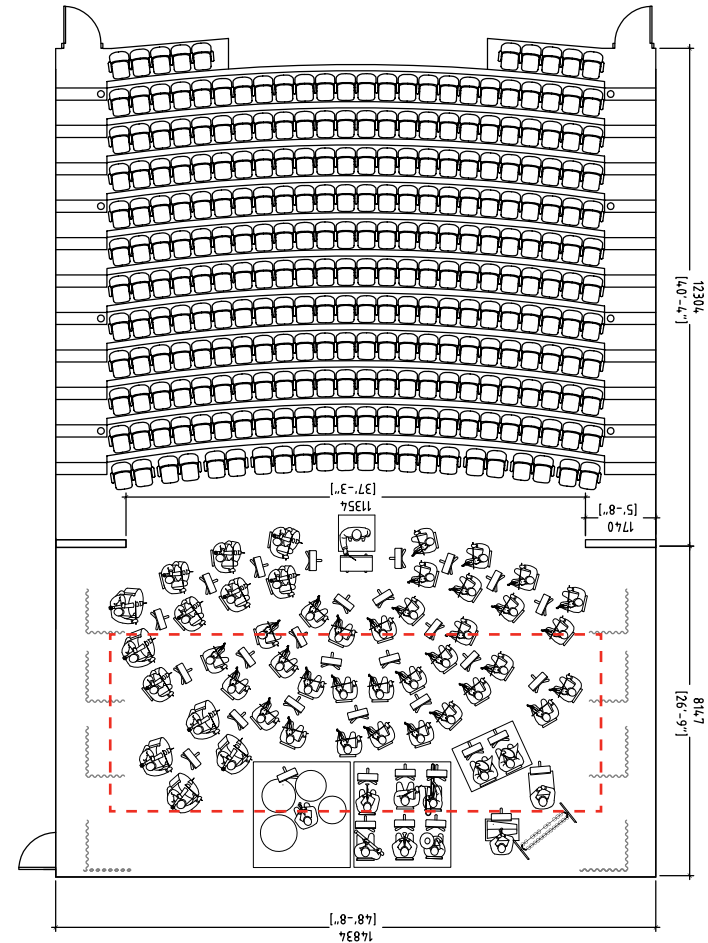




**AURORA THEATRE 252 SEATS**  
**APPROX MUSICIANS: 25**



**ROXY THEATRE 212 SEATS**  
**APPROX MUSICIANS: 36**



**GCTC 262 SEATS**  
**APPROX MUSICIANS: 57**

**STAGE SIZE STUDY WITH CHAMBER ORCHESTRA**  
**AURORA, ROXY AND GCTC**



NOT TO SCALE

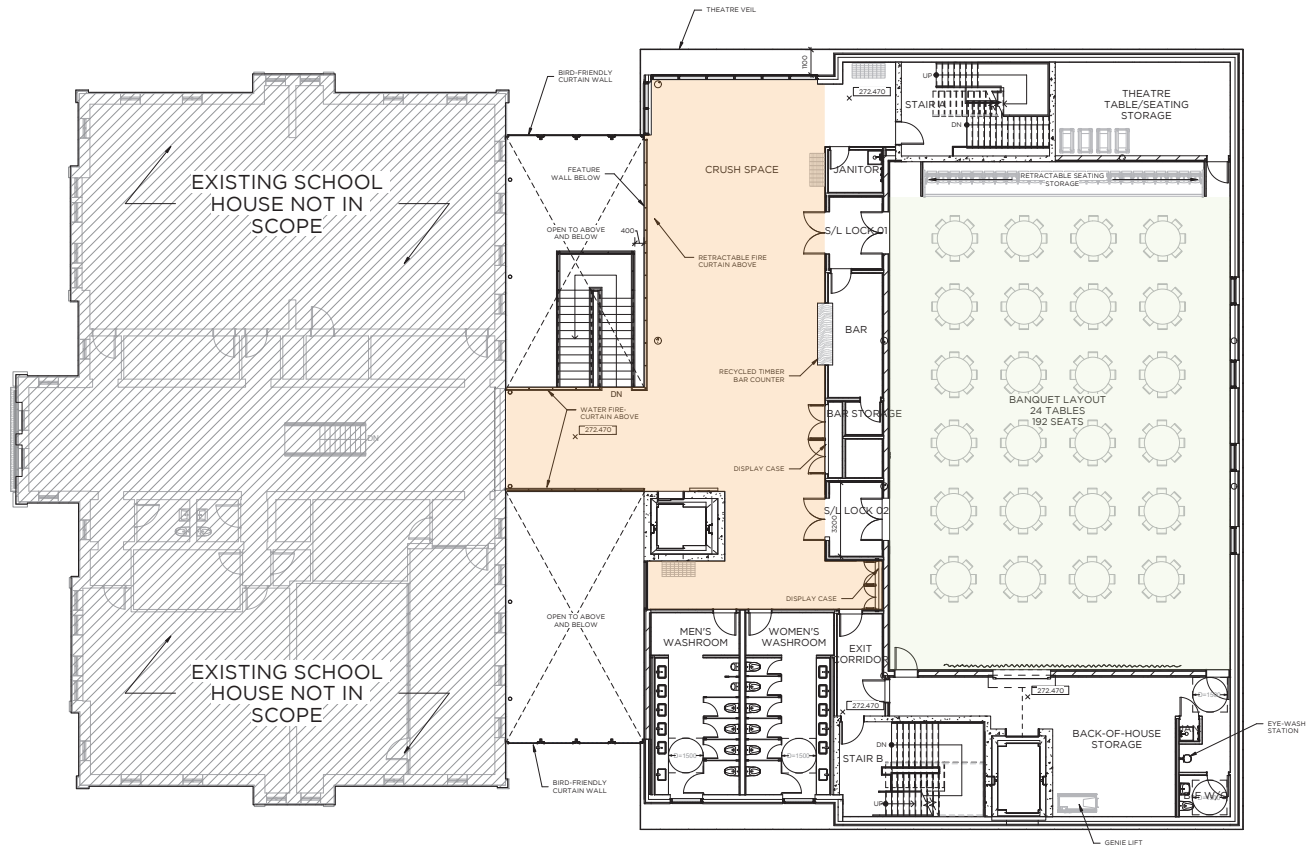
MCLD

**STAGE SIZE COMPARISONS**

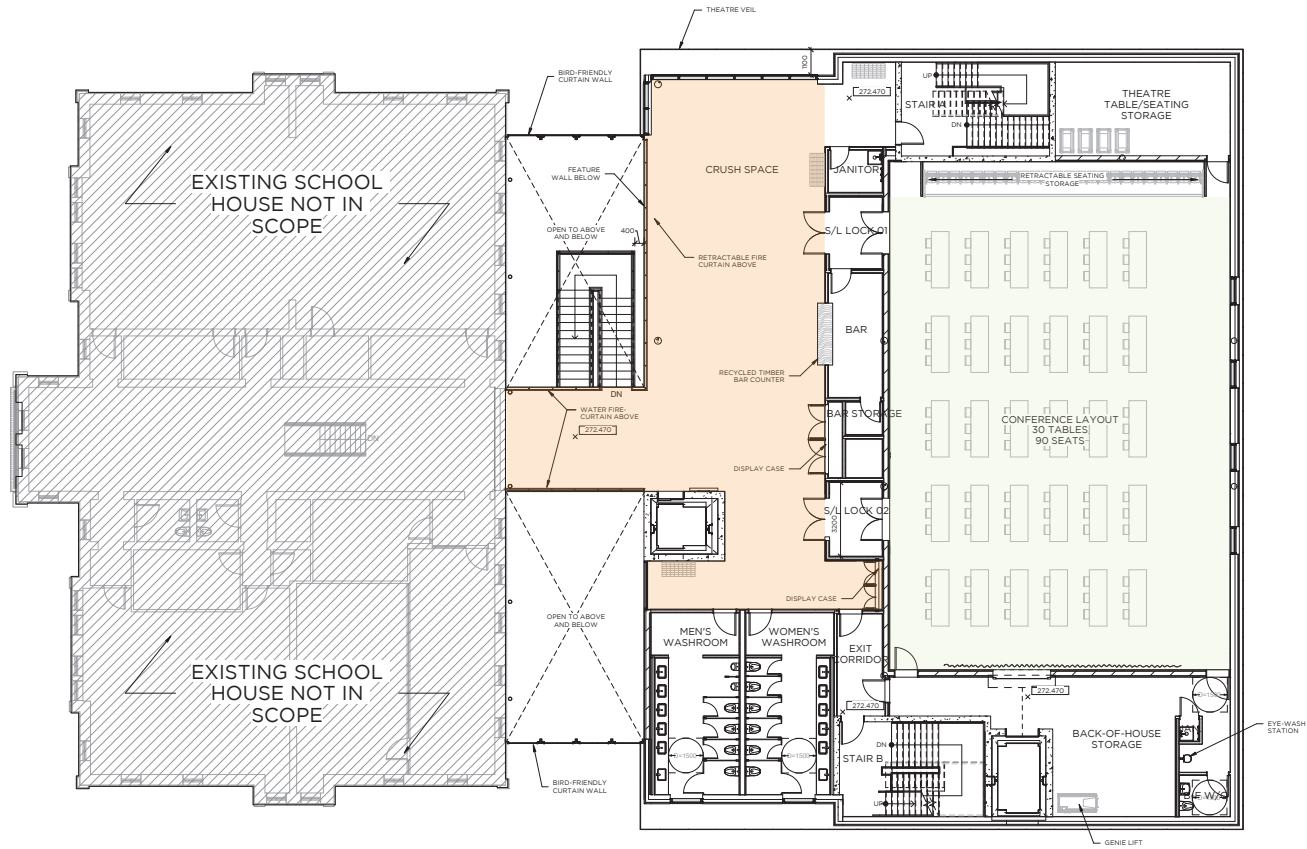


LIBRARY SQUARE  
**TOWN OF AURORA**  
 FEBRUARY 12, 2019

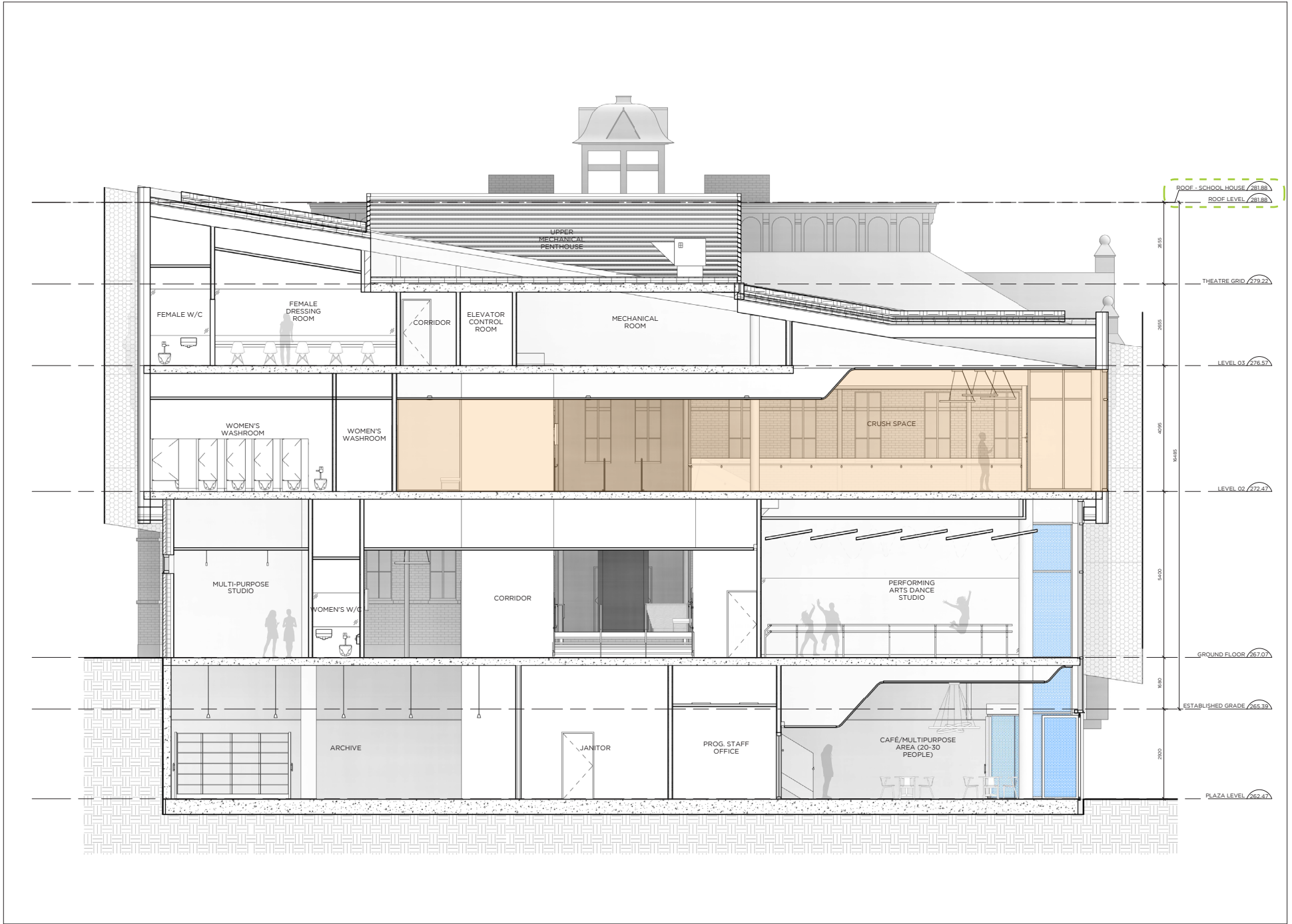




PERFORMANCE HALL LEVEL - BANQUET CONFIGURATION



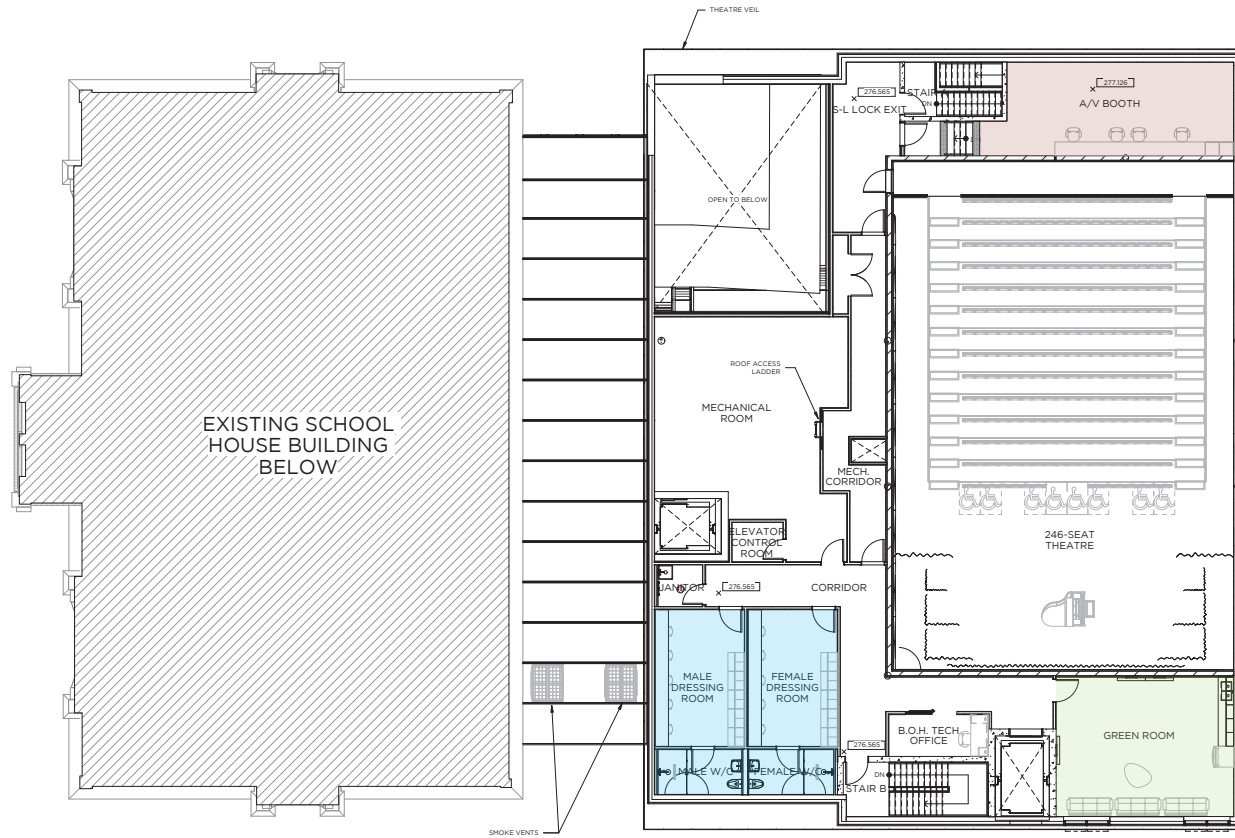
PERFORMANCE HALL LEVEL - CONFERENCE CONFIGURATION



EAST-WEST BUILDING SECTION

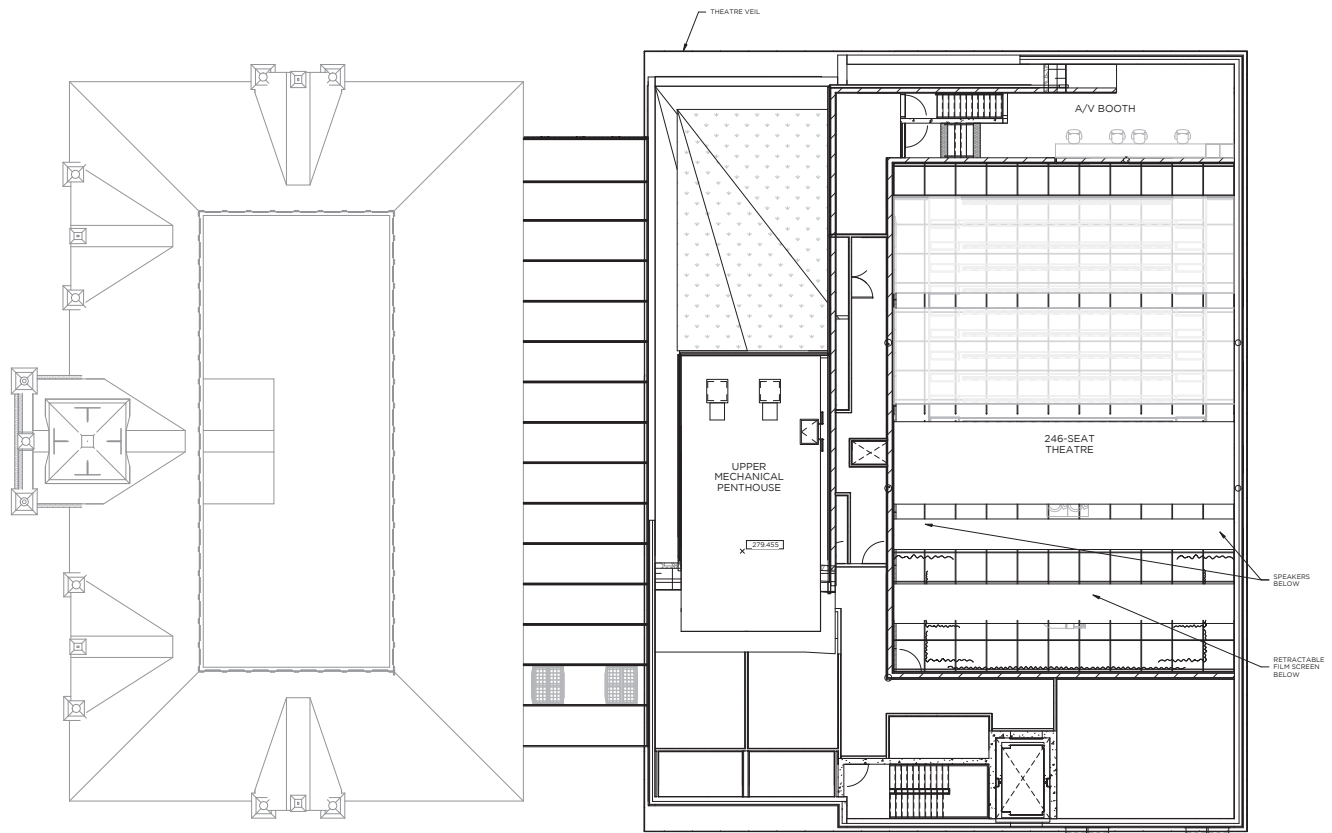


**INTERMISSION SPACE / GALLERY**

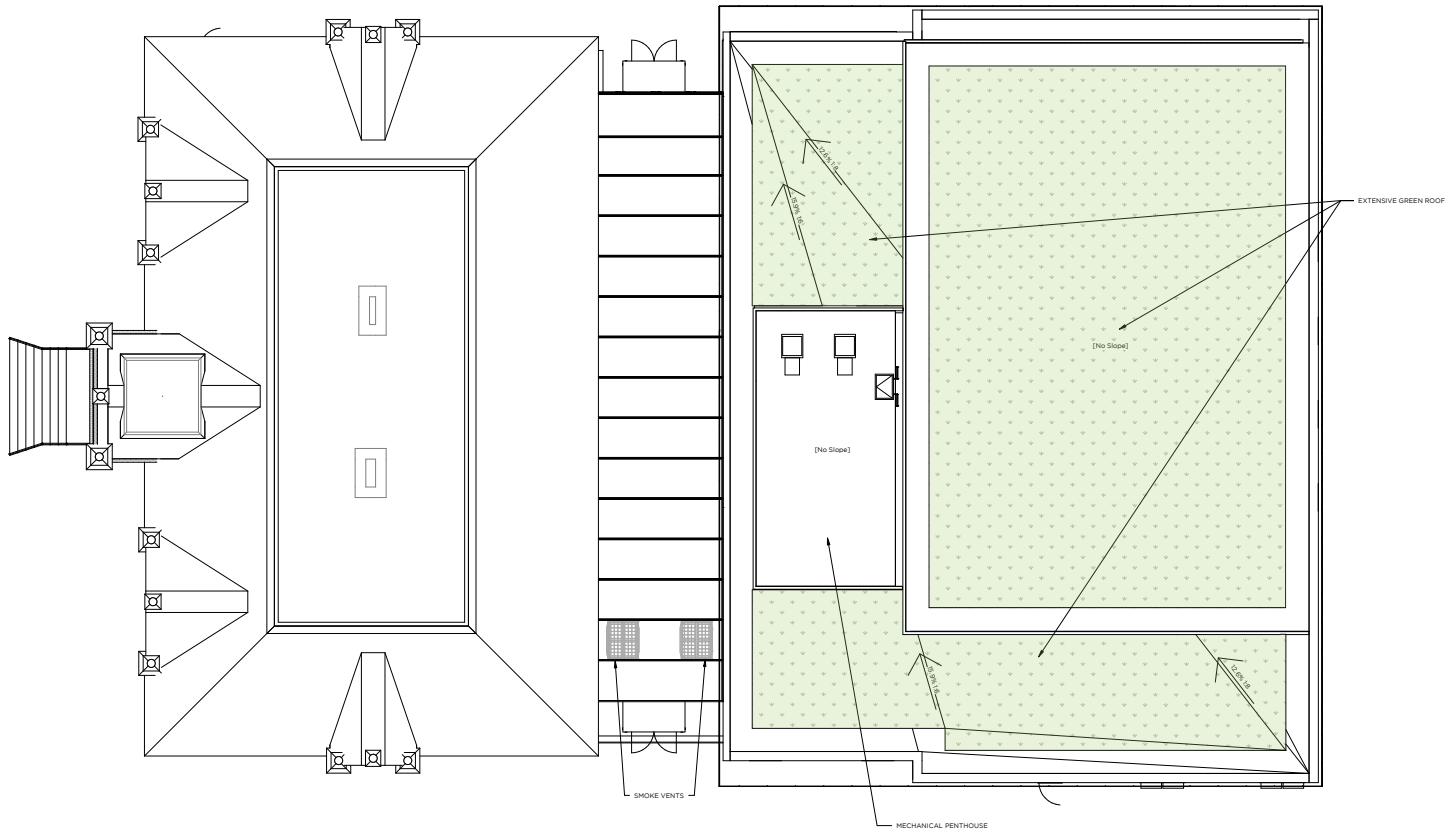


**THIRD LEVEL PLAN**





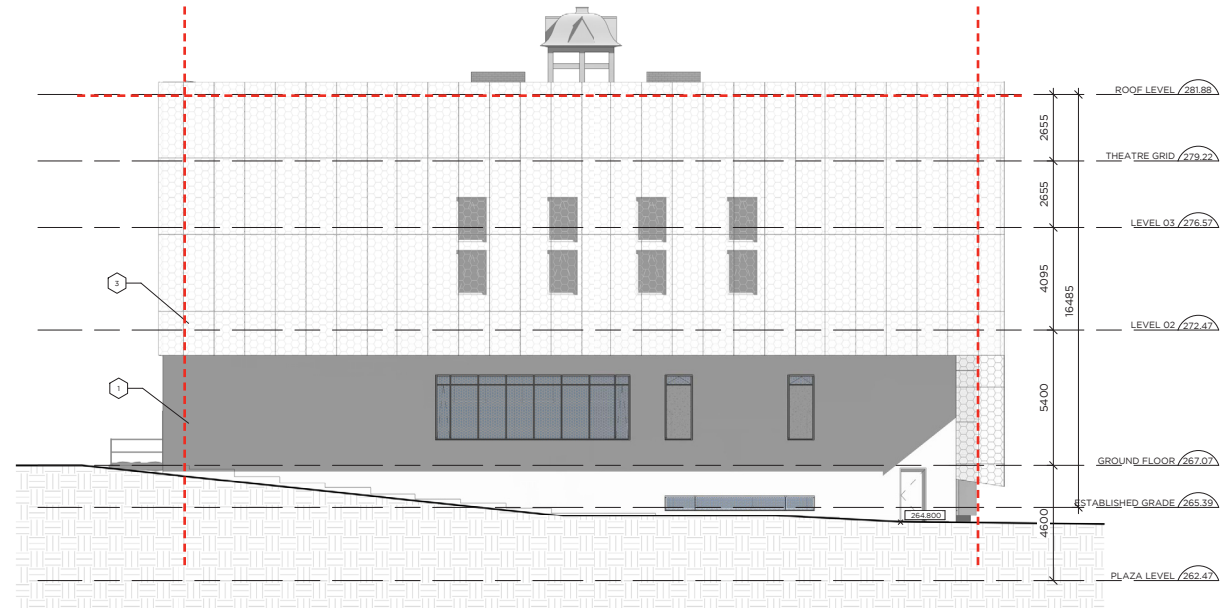
# THEATRE GRID LEVEL PLAN



## ROOF LEVEL PLAN

**MATERIALS LEGEND**

- 1 BOARD-FORMED CAST-IN-PLACE CONCRETE + PRE-CAST CONCRETE PANELS
- 2 SPIDER-JOINT CURTAIN WALL
- 3 EXPANDED-METAL COPPER VEIL
- 4 ALUMINIUM LOUVERS
- 5 EXTENSIVE GREEN ROOF
- 6 ACM PANEL



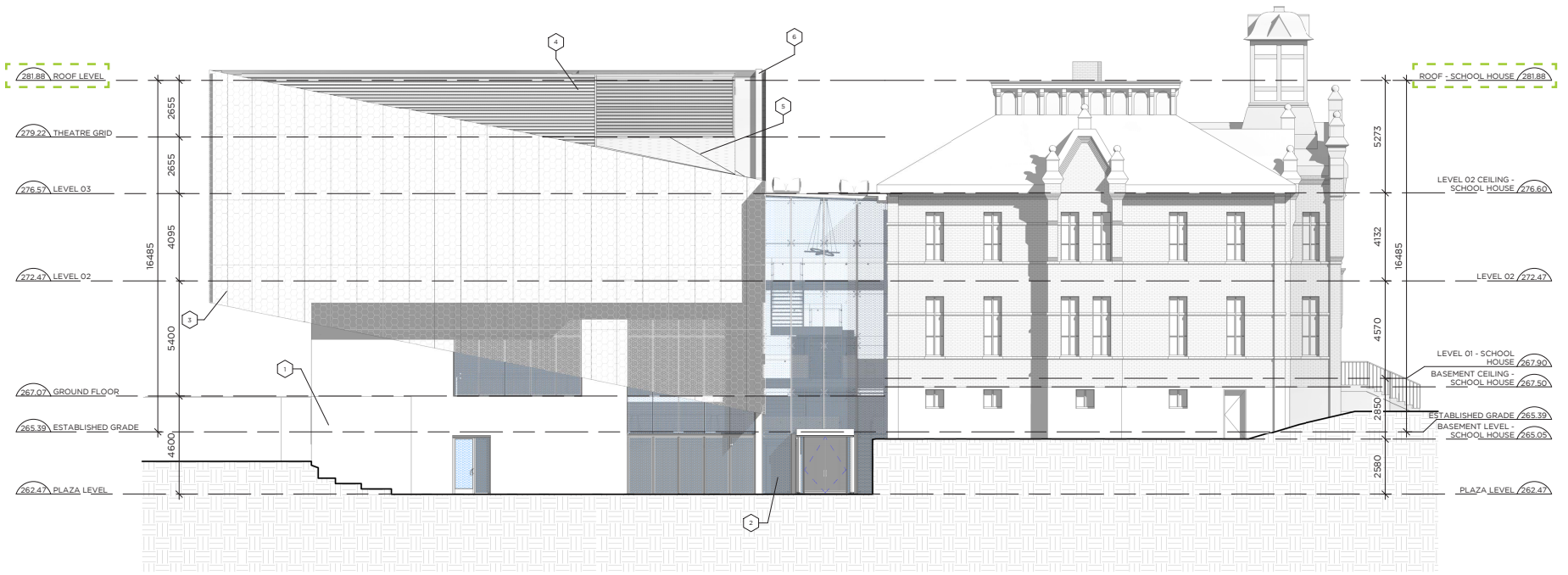
**NORTH + SOUTH ELEVATIONS**



VIEW FROM VICTORIA STREET

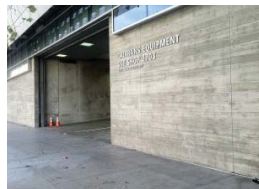
**MATERIALS LEGEND**

- 1 BOARD-FORMED CAST-IN-PLACE CONCRETE + PRE-CAST CONCRETE PANELS
- 2 SPIDER-JOINT CURTAIN WALL
- 3 EXPANDED-METAL COPPER VEIL
- 4 ALUMINIUM LOUVERS
- 5 EXTENSIVE GREEN ROOF
- 6 ACM PANEL



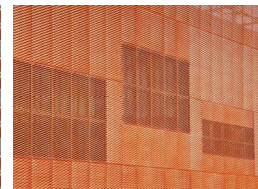
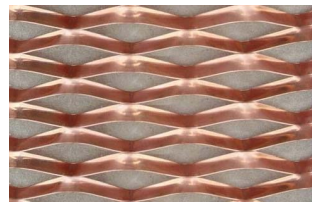
**EXTERIOR BUILDING MATERIALS**

1 - BOARD-FORMED CAST-IN-PLACE CONCRETE + PRE-CAST CONCRETE PANELS



EXAMPLE

3 - EXPANDED METAL MESH - PATINATED METAL



EXAMPLE

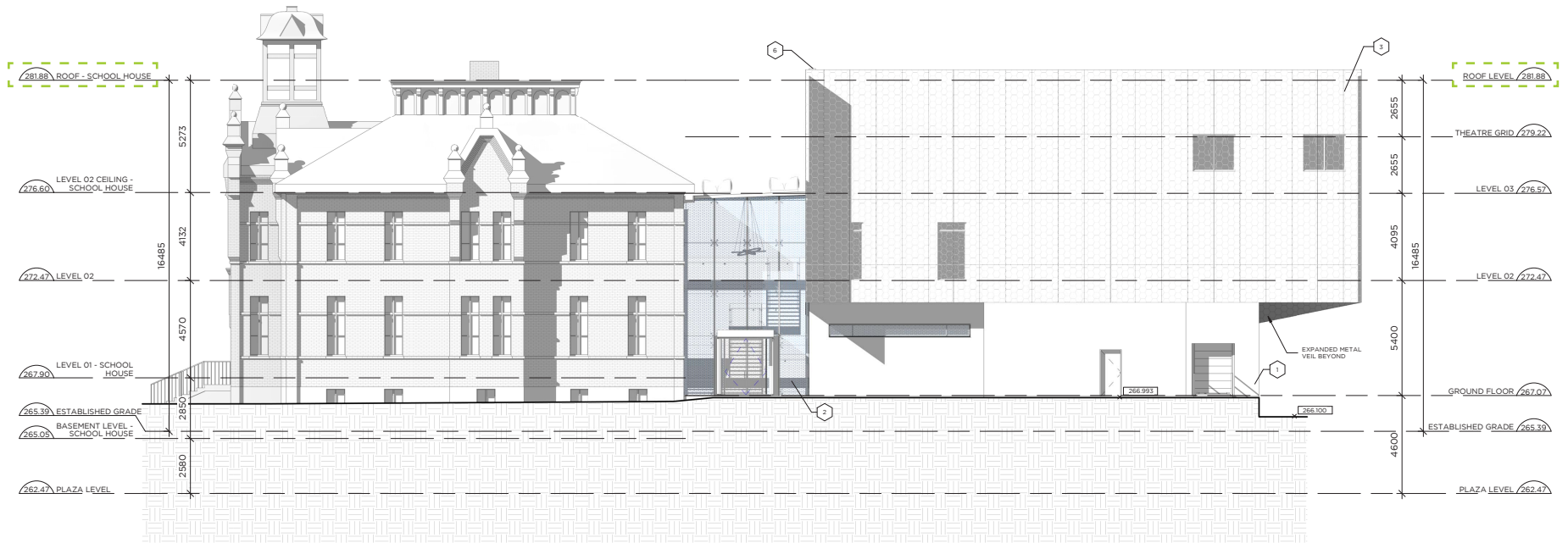
6 - ACM PANEL - LIGHT SILVER



EXAMPLE

**WEST ELEVATION**

MATERIALS LEGEND	
1	BOARD-FORMED CAST-IN-PLACE CONCRETE + PRE-CAST CONCRETE PANELS
2	SPIDER-JOINT CURTAIN WALL
3	EXPANDED-METAL COPPER VEIL
4	ALUMINIUM LOUVERS
5	EXTENSIVE GREEN ROOF
6	ACM PANEL



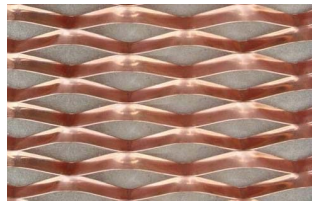
**EXTERIOR BUILDING MATERIALS**

1 - BOARD-FORMED CAST-IN-PLACE CONCRETE + PRE-CAST CONCRETE PANELS



EXAMPLE

3 - EXPANDED METAL MESH - PATINATED METAL

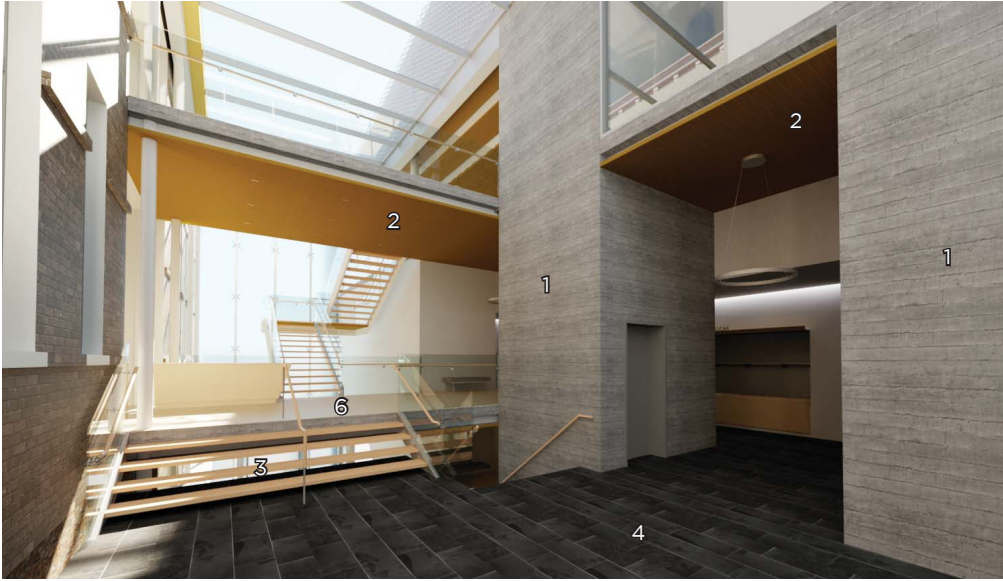


EXAMPLE

6 - ACM PANEL - LIGHT SILVER

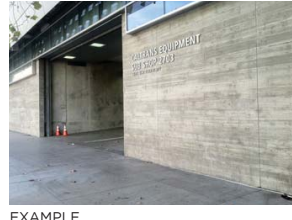


EXAMPLE



**INTERIOR BUILDING MATERIALS**

1 - BOARD-FORMED CAST-IN-PLACE CONCRETE



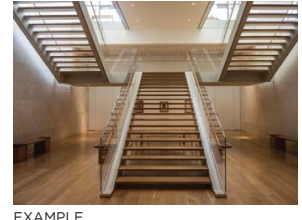
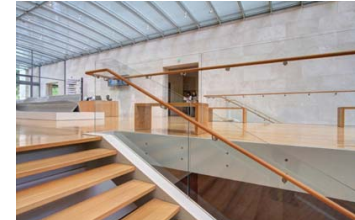
EXAMPLE

2 - FIRE-RATED WOOD SLAT CEILING - MAPLE



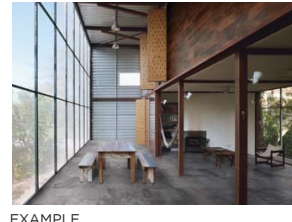
EXAMPLE

3 - WOOD-CLAD STEEL STAIRS - OPEN RISER - MAPLE



EXAMPLE

4 - SLATE TILE - LIGHT GREY



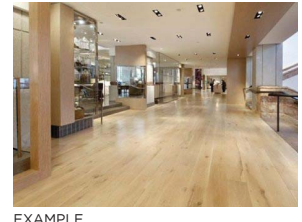
EXAMPLE

5 - GYPSUM WALLS - WHITE



EXAMPLE

6 - MAPLE FLOORING



EXAMPLE

**INTERIOR MATERIALS**



VIEW FROM CHURCH STREET



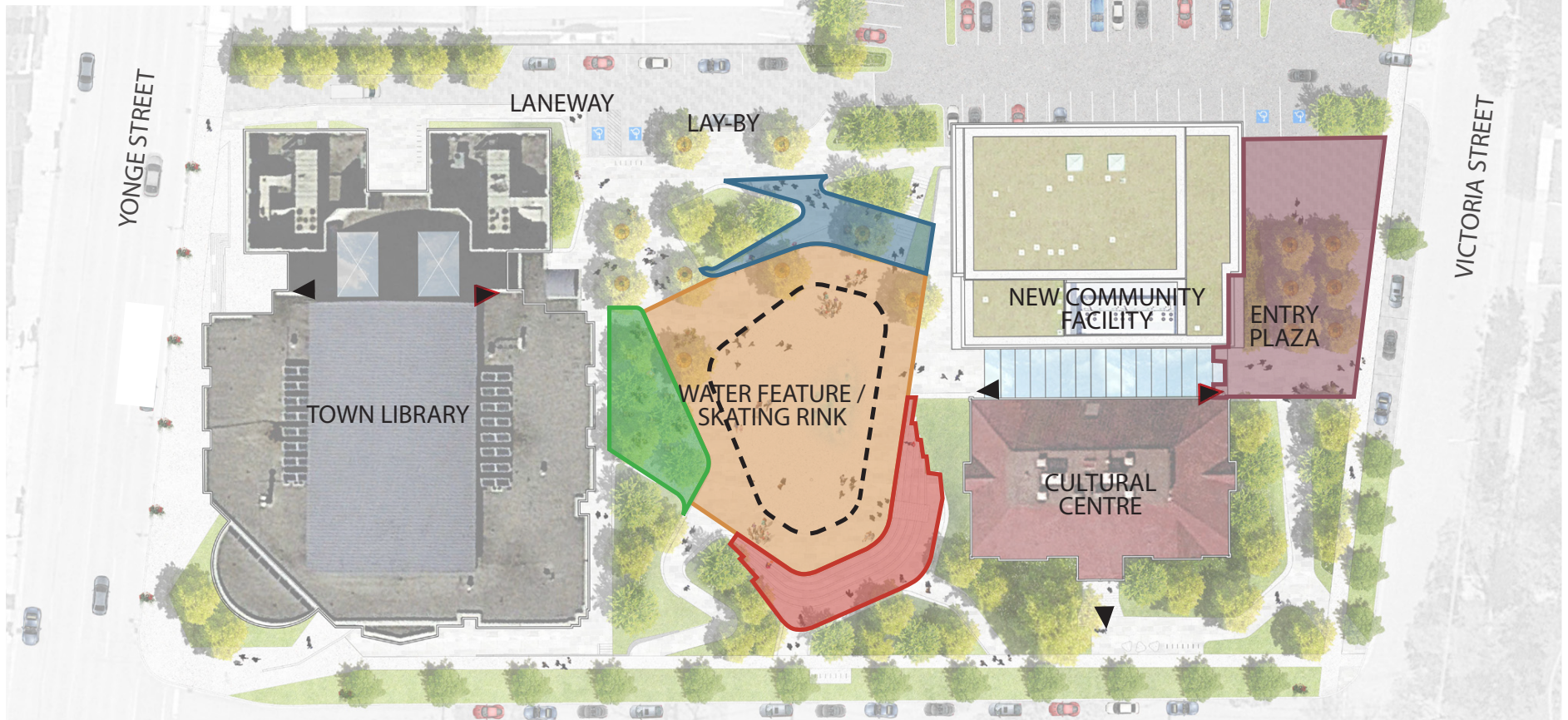
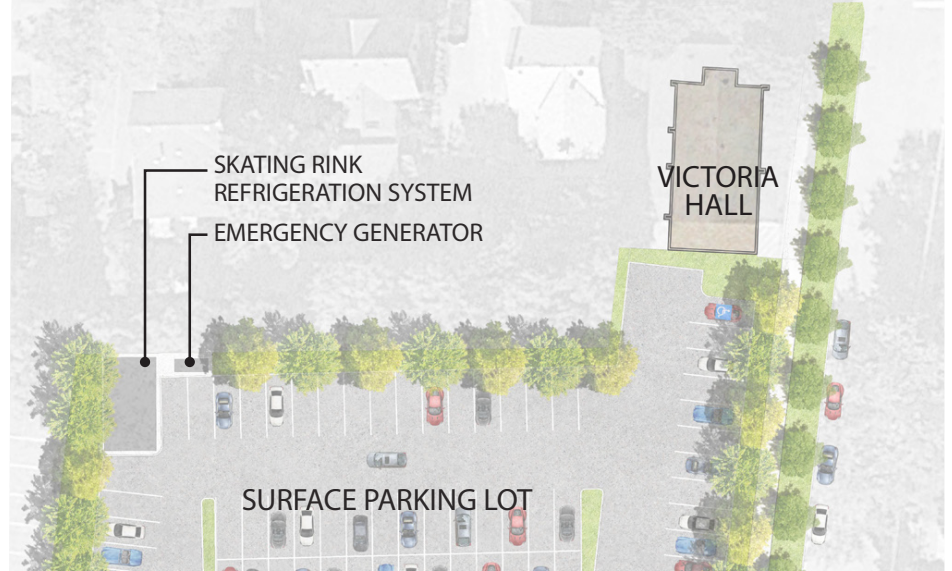


VIEW FROM PARKING LOT








# Outdoor Rooms

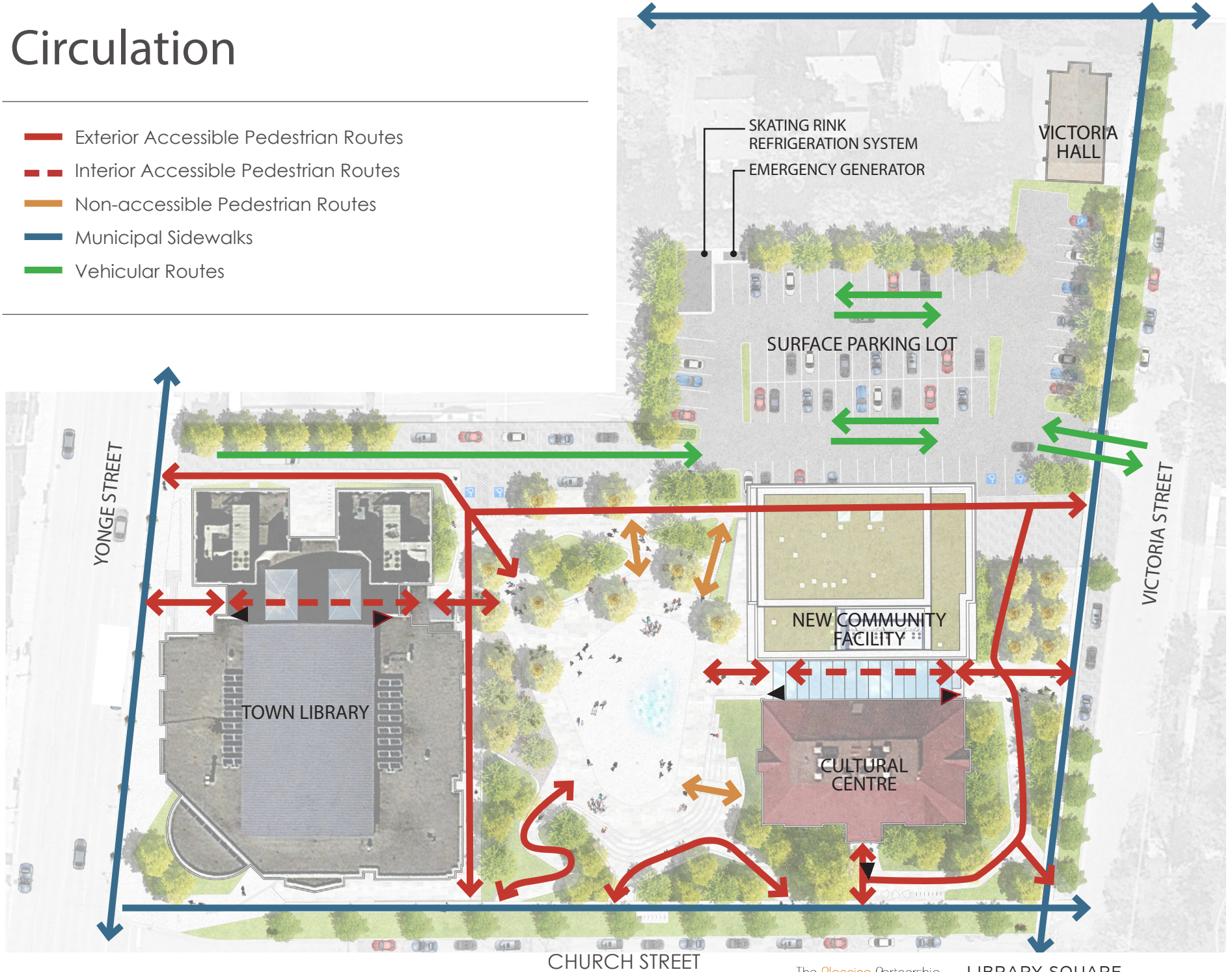
- Plaza
- Entry Plaza
- Amphitheatre
- Terraced Plaza
- Reading Room
- Water Feature / Skating Rink



CHURCH STREET

# Circulation

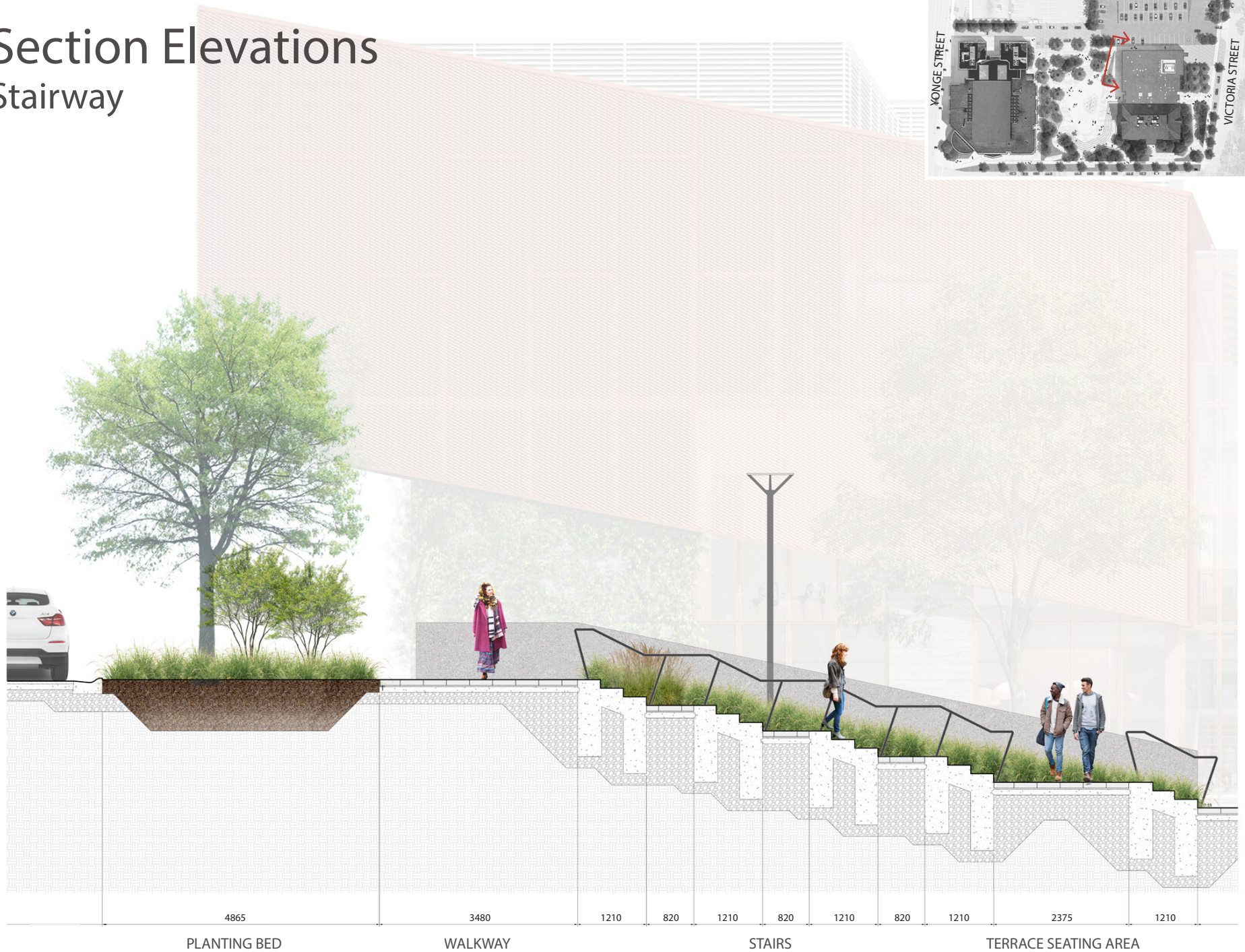
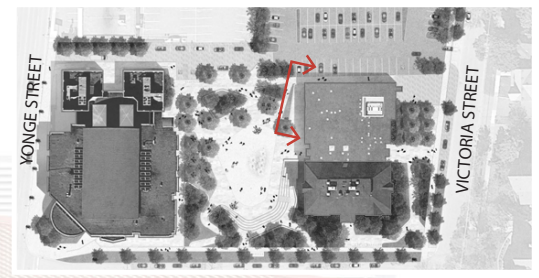
-  Exterior Accessible Pedestrian Routes
-  Interior Accessible Pedestrian Routes
-  Non-accessible Pedestrian Routes
-  Municipal Sidewalks
-  Vehicular Routes



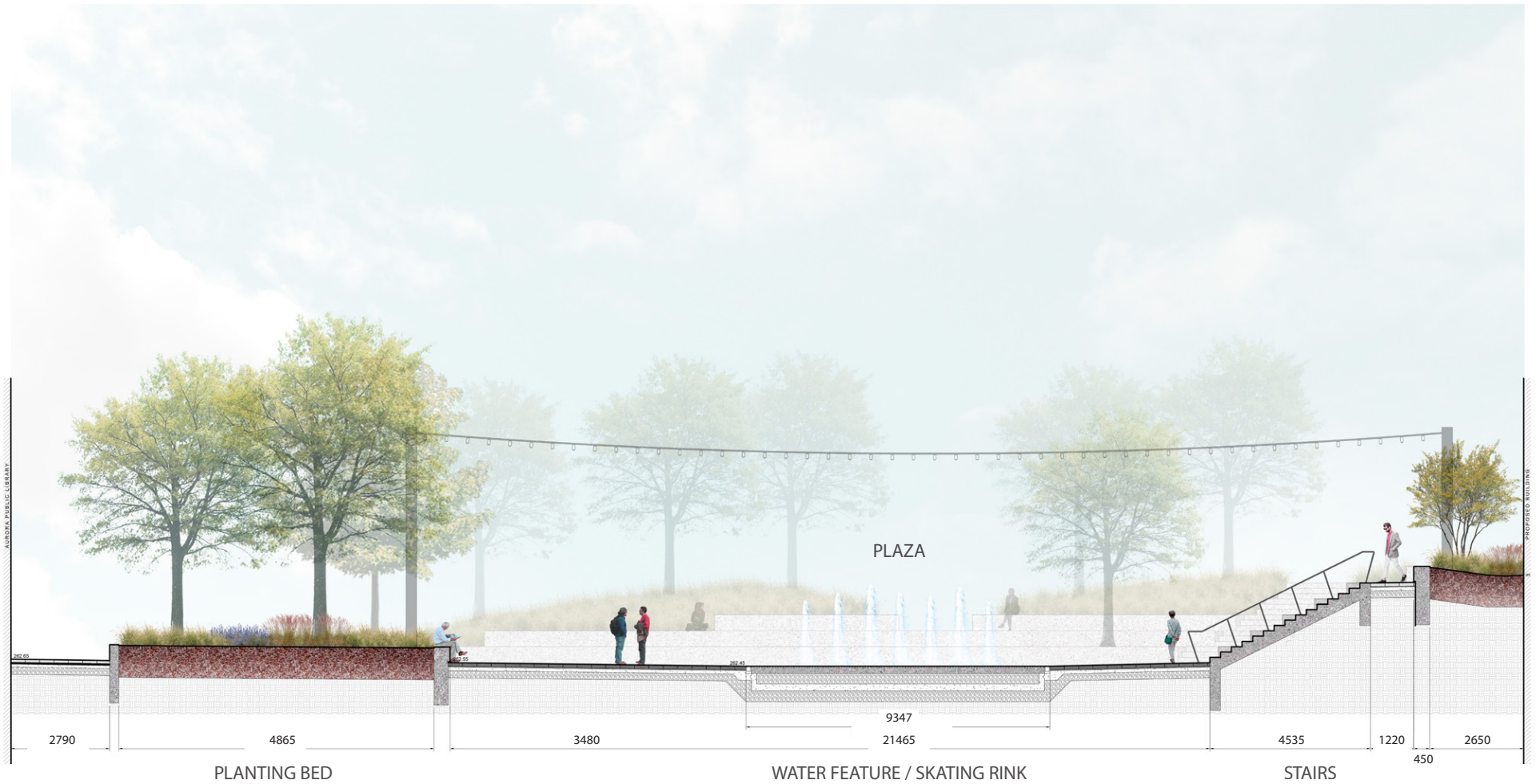
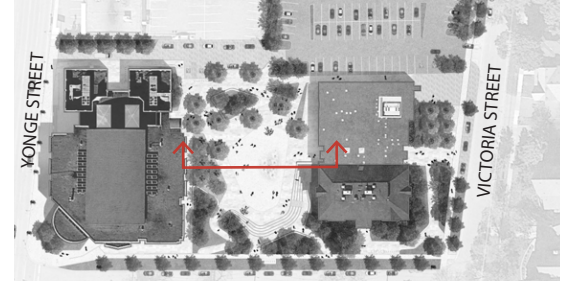
CHURCH STREET

# Section Elevations

## Stairway

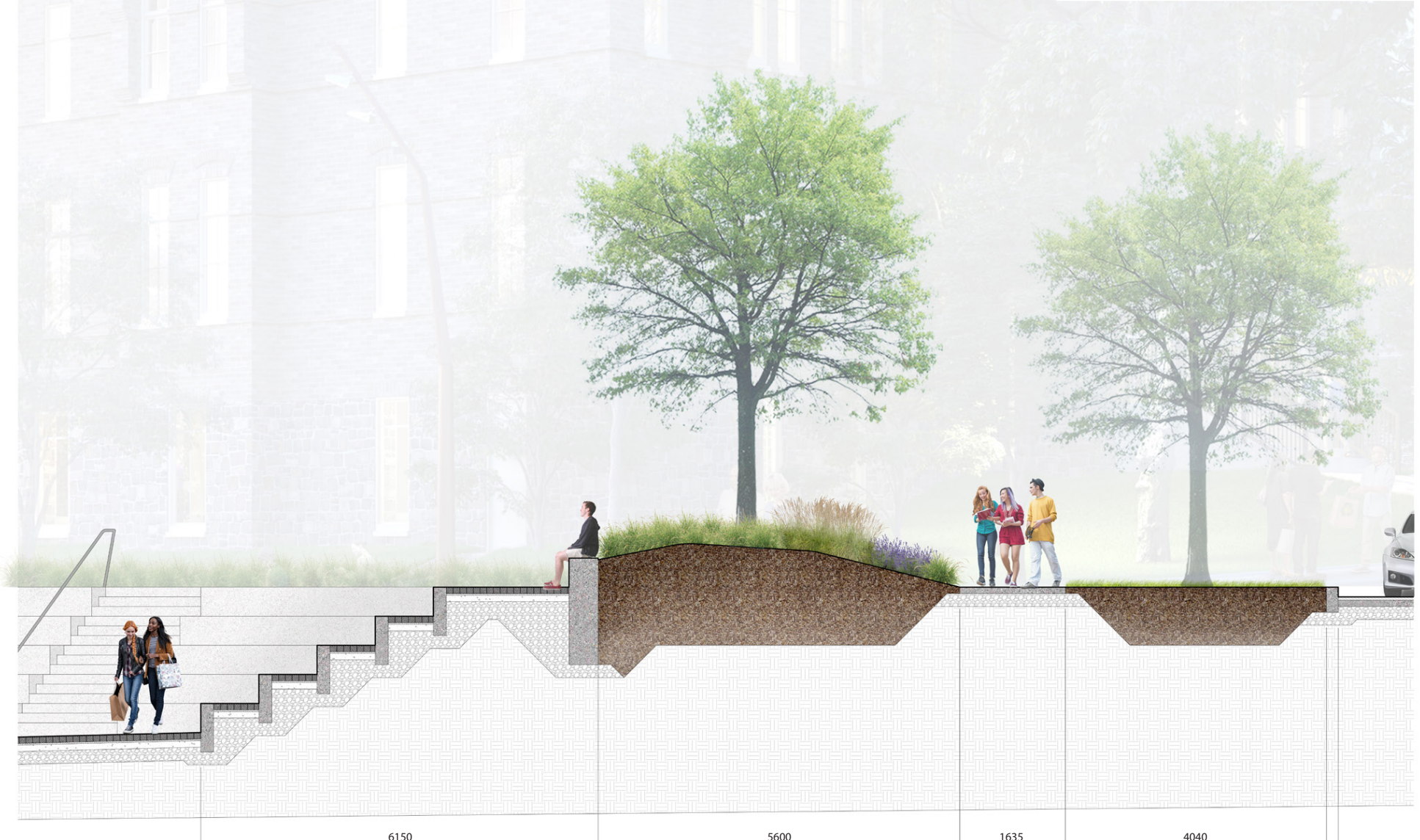
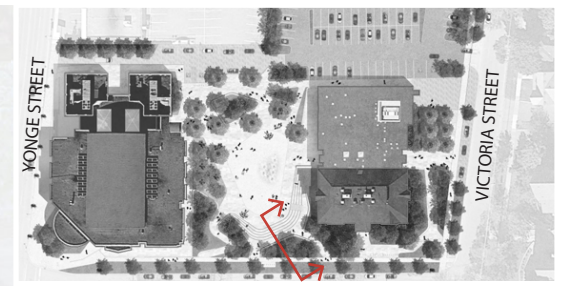


# Section Elevations Plaza



# Section Elevations

## Amphitheater



6150

5600

1635

4040

AMPHITHEATER SEATING

PLANTING BED

SIDEWALK

LAWN AREA

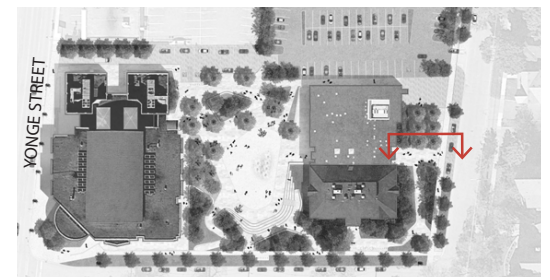


LIBRARY SQUARE  
**TOWN OF AURORA**  
 FEBRUARY 12, 2019



# Section Elevations

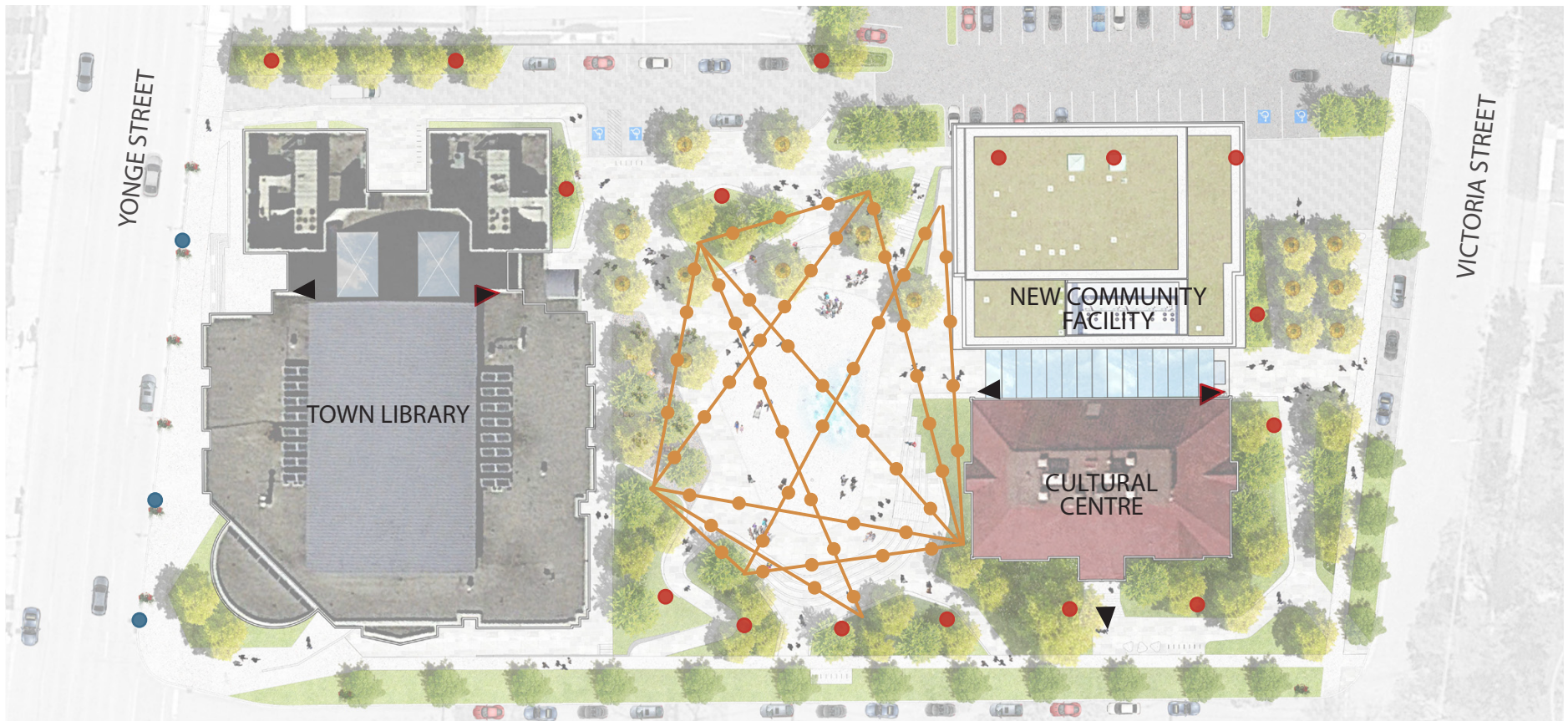
## Entry Plaza





# Lighting

- Catenary Lights
- Pedestrian Lights
- Street Lights to Remain



CHURCH STREET

# Site Finishings

## Paving



PEDESTRIAN GRANITE PAVING



VEHICULAR CONCRETE PAVING

# Site Finishings

## Furnishings



# Site Finishings

## Lighting



# Site Finishings

## Plant Material

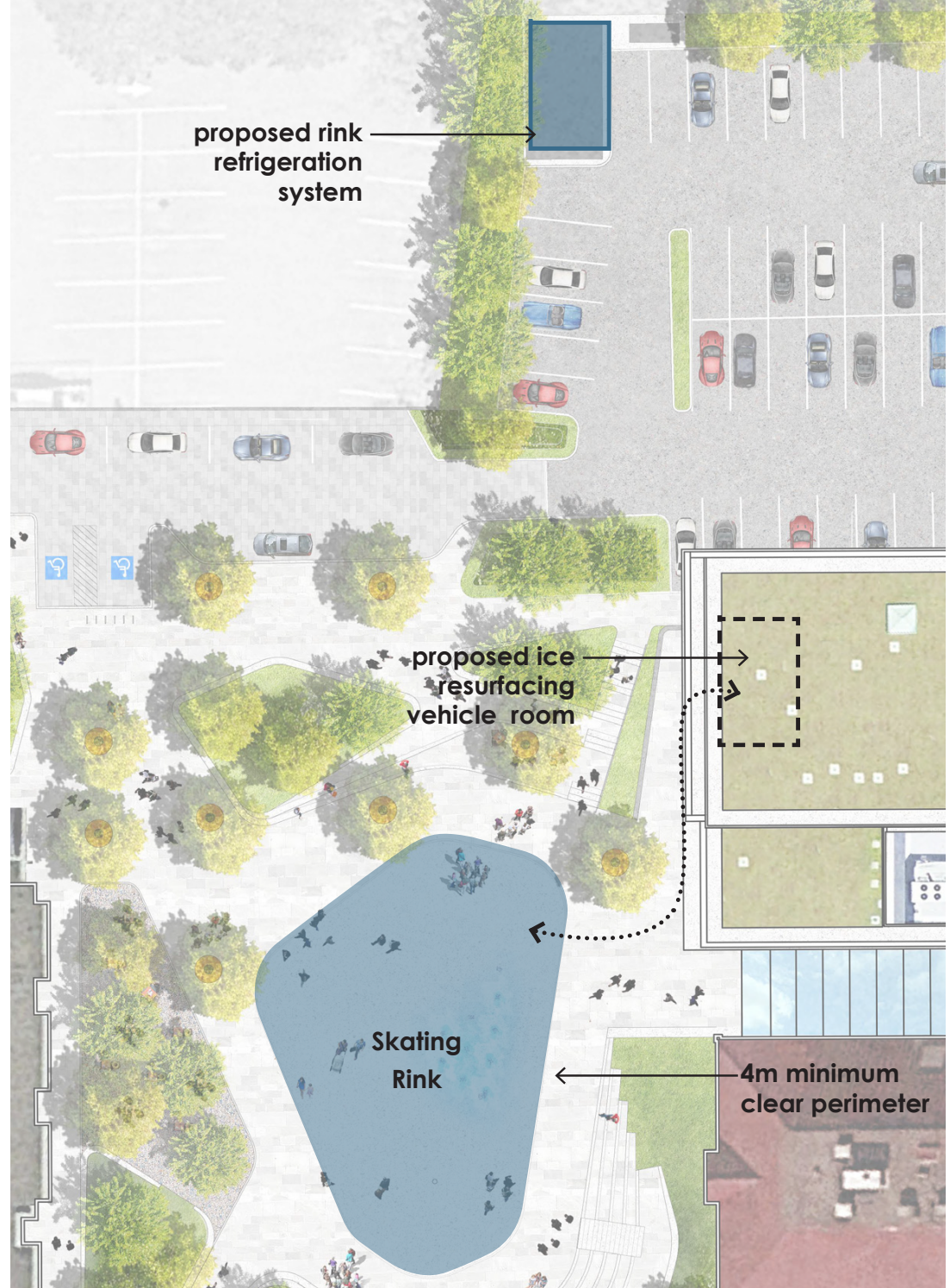


# Programming Skating Rink

## Capacity:

400 square metre

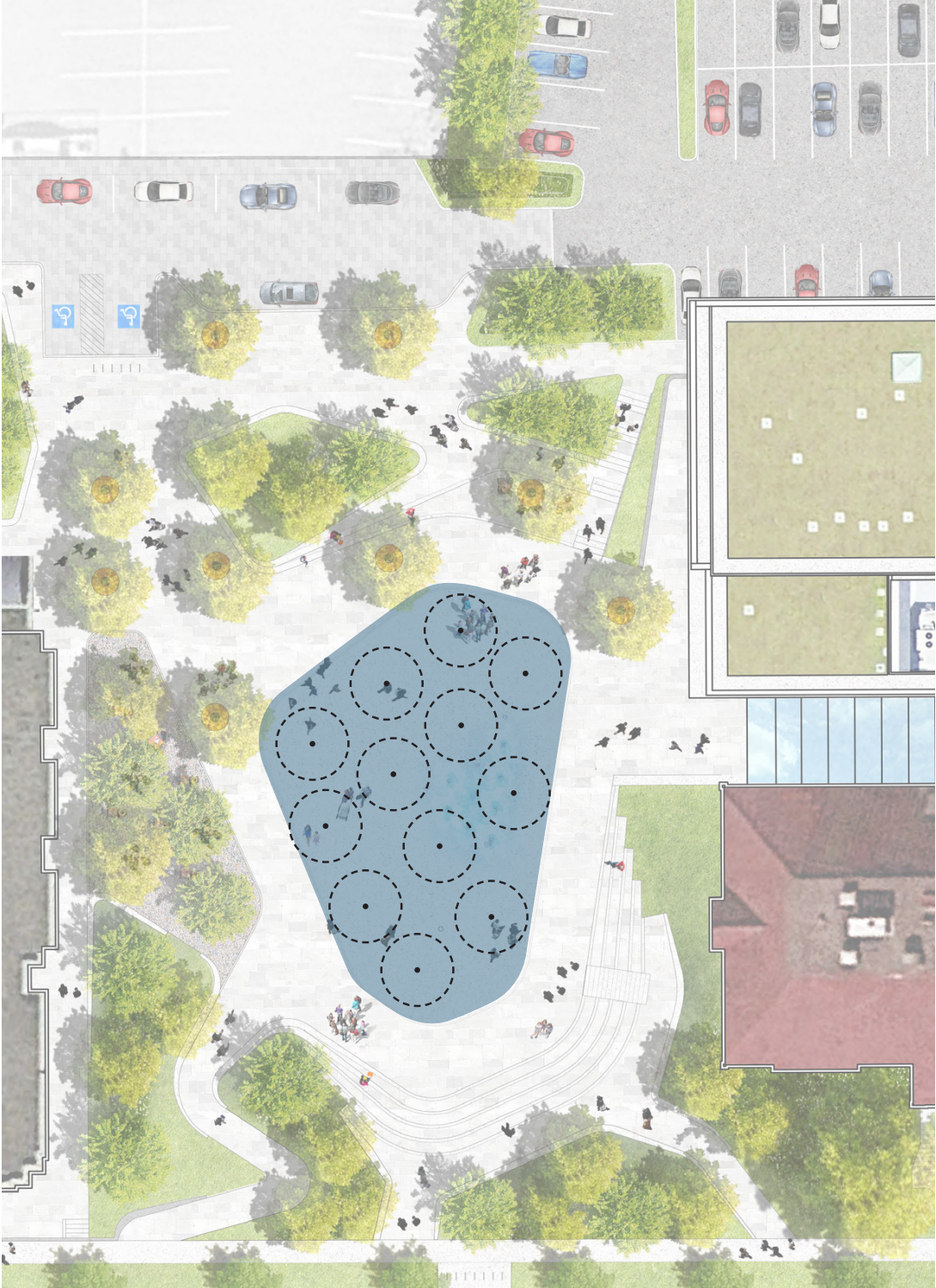
65 person skating capacity



# Programming Water Feature



Maximum water jet height of 1.5m



# Programming

## Seating & Quiet Spaces

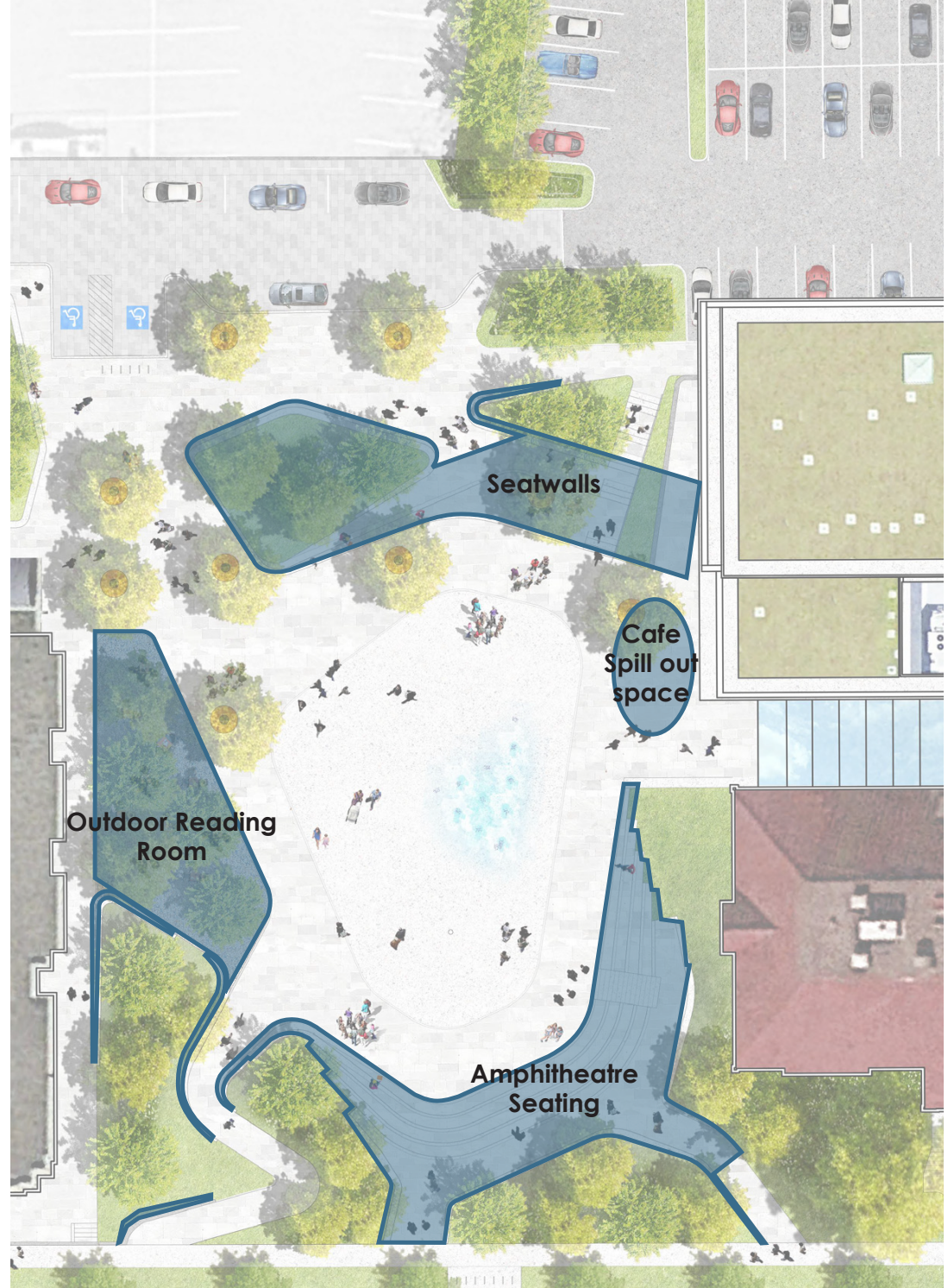
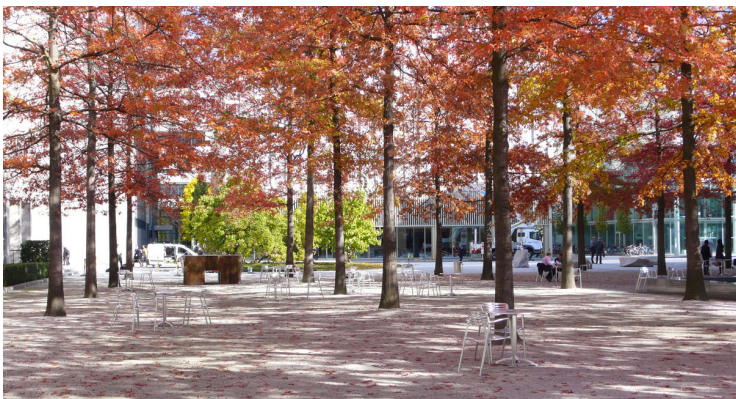
### Capacity:

290 people in the amphitheatre seating

220 people on the seatwalls

15 tables (4 seats per table) in the cafe

35 tables (4 seats per table) in the outdoor reading room

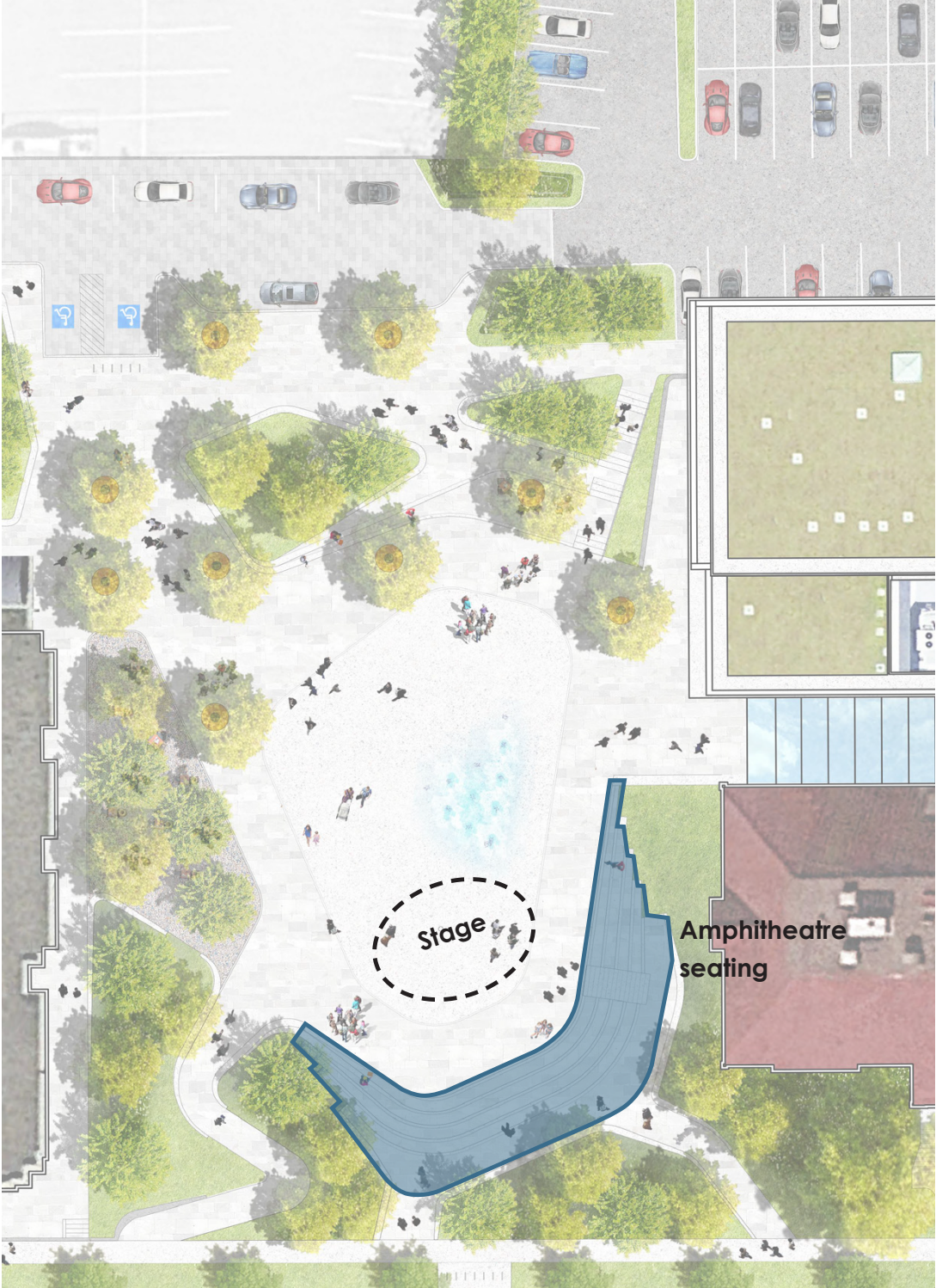




# Programming Concert Performance

## Capacity:

290 people in the amphitheatre seating



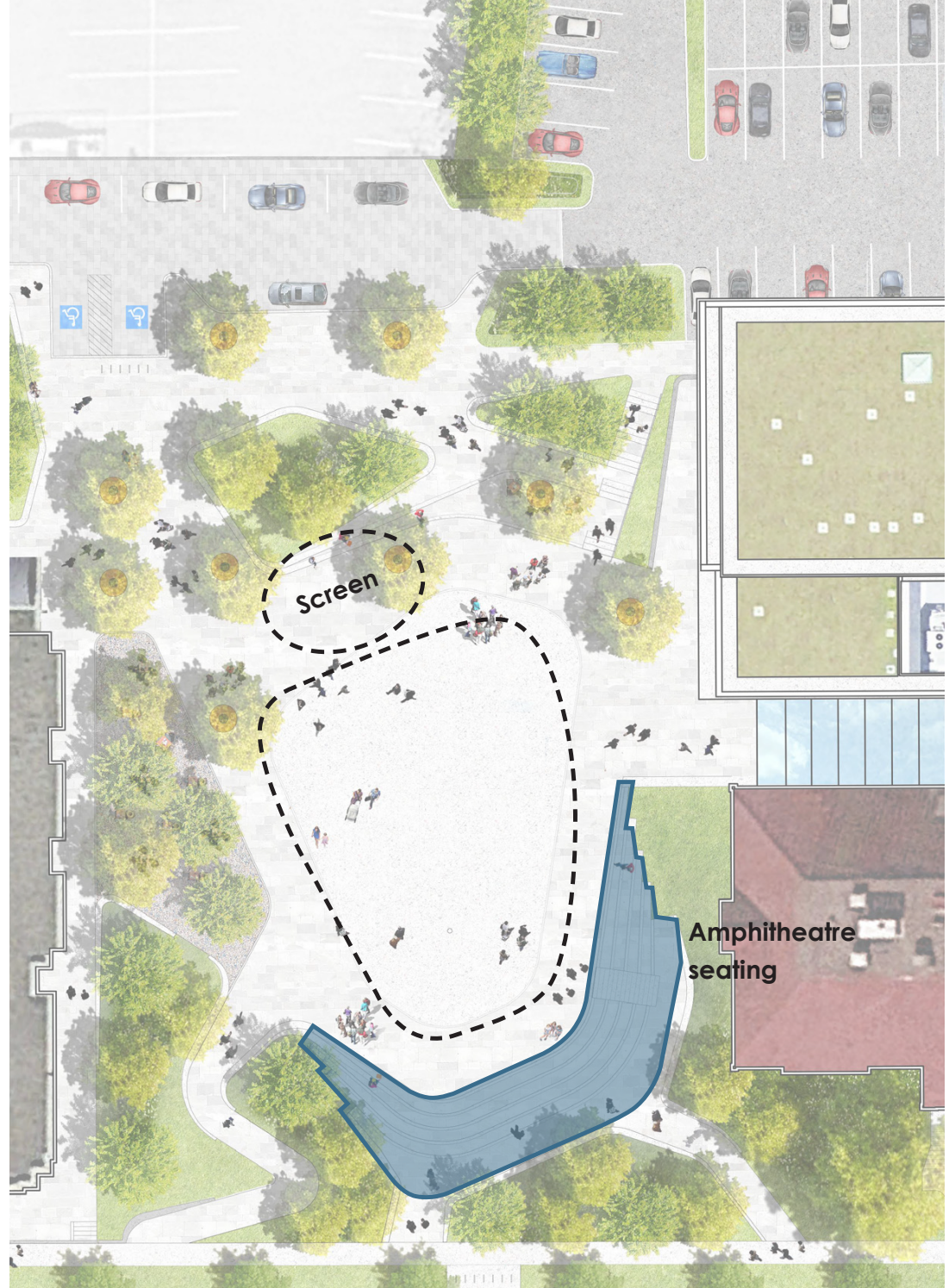
# Programming

## Movie Night / Festivals

### Capacity:

290 people in the amphitheatre seating

630 people seating / 1400 people standing in the plaza

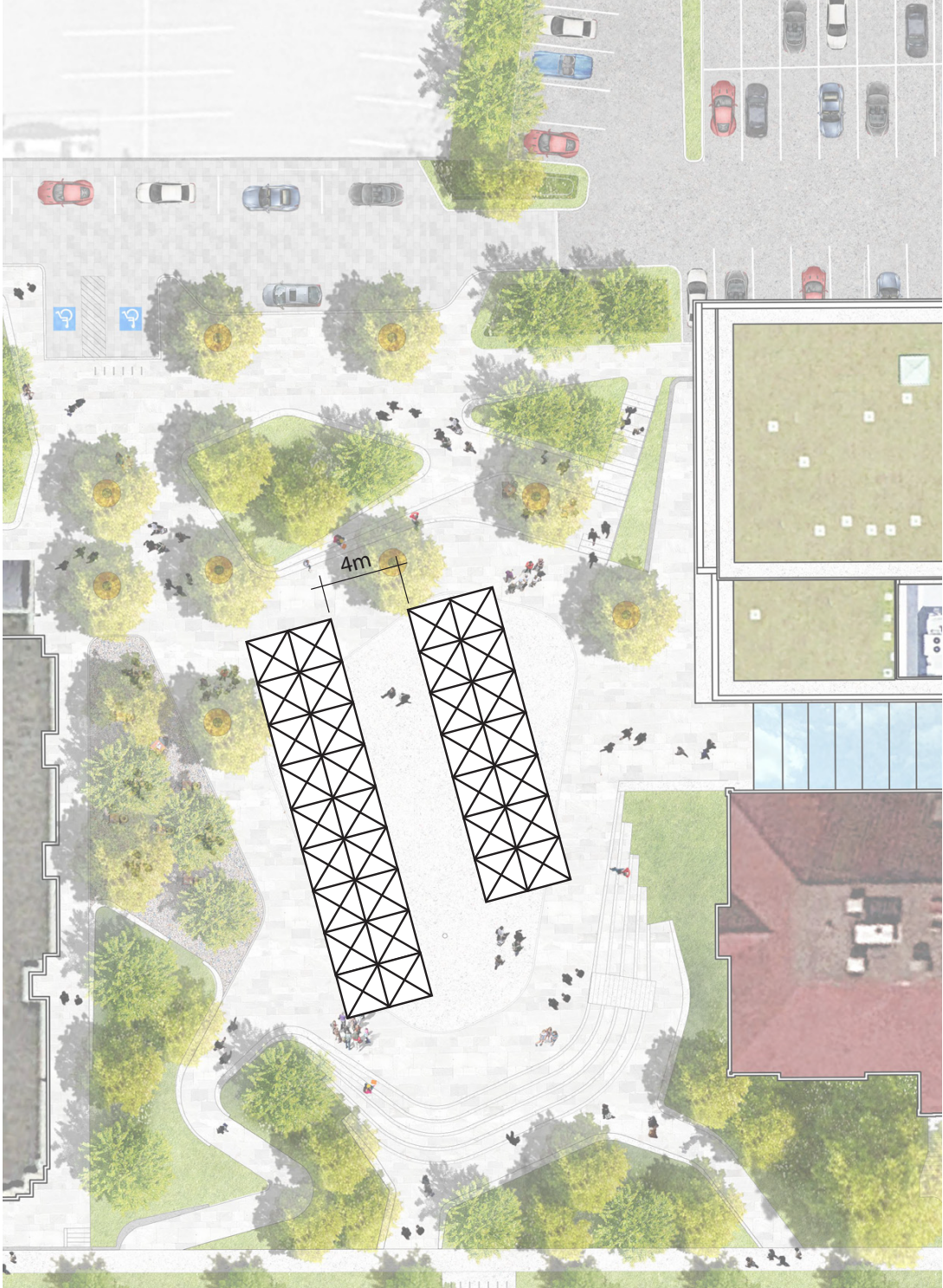


# Programming Market

## Capacity:

3m x 3m tent  
4m wide walk aisle

30 tents in plaza



# Programming Entry Plaza

**Capacity:**

325 people standing

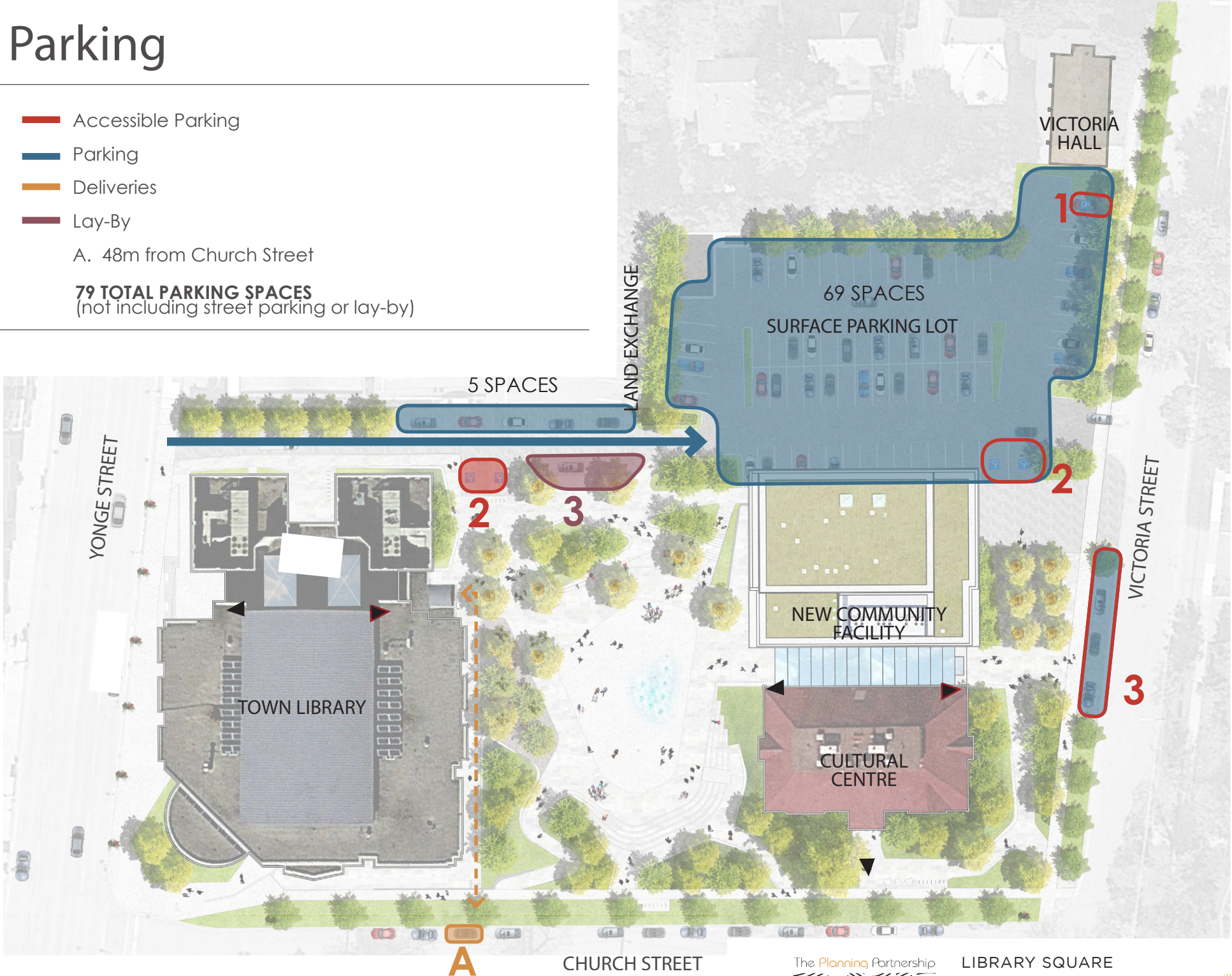


# Parking

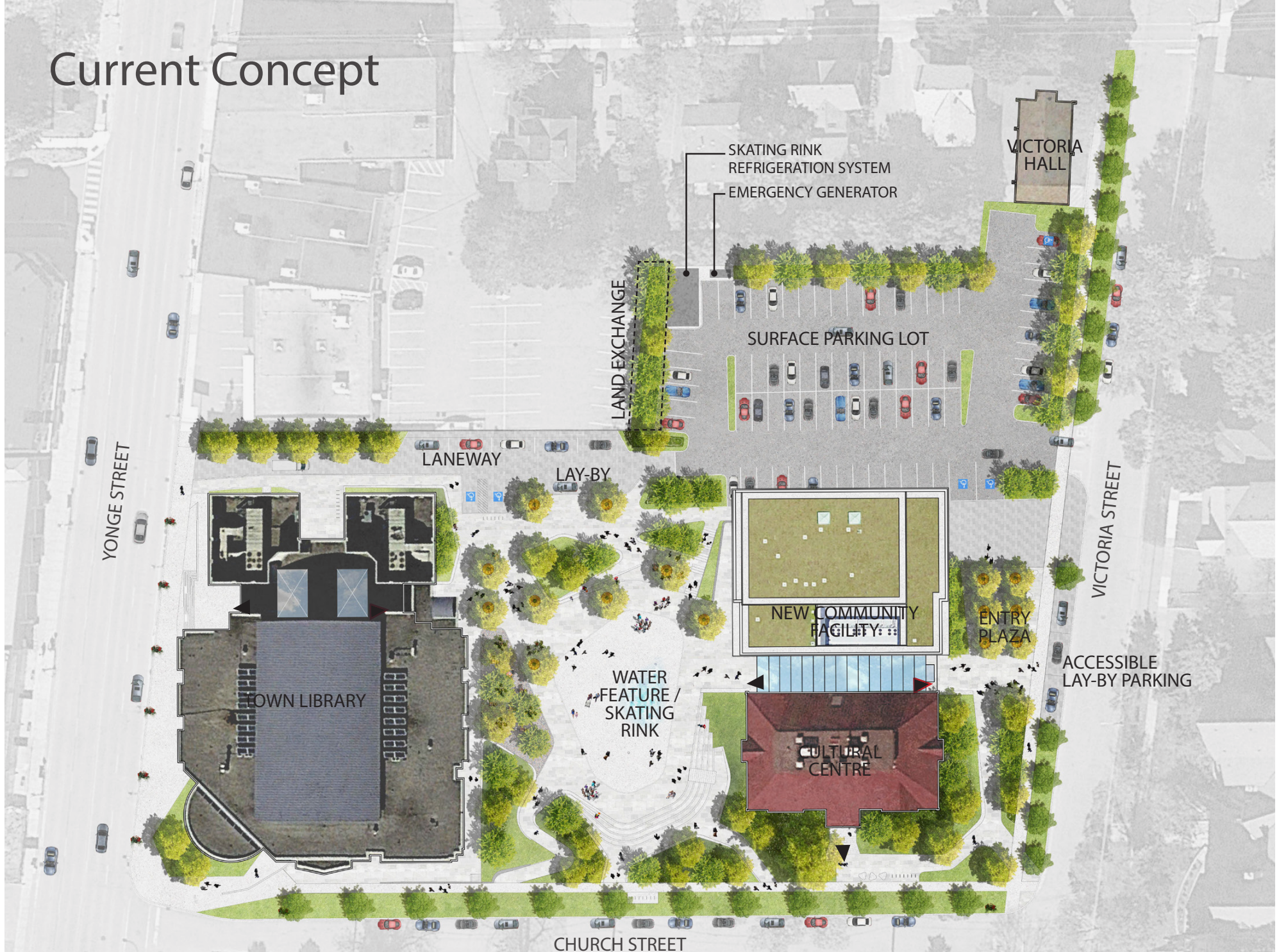
- █ Accessible Parking
- █ Parking
- █ Deliveries
- █ Lay-By

A. 48m from Church Street

**79 TOTAL PARKING SPACES**  
(not including street parking or lay-by)



# Current Concept



# CURRENT PROJECT SCHEDULE

## WINTER 2019

- Approval of the revised plan for Library Square including the ice rink
- Approval of the Schematic for the new building
- Tendering and construction of the parking lot and pedestrian connections

## SPRING 2019

- Commencement and completion of Design Development Phase for new building

## SUMMER 2019

- Commencement of Construction Documentation Phase for Square and new building
- Construction of the parking lot and pedestrian connections completed

## FALL 2019

- Approval of funding for tendering and construction of the Square and new building, including 1% of the capital budget for the Square and new building to be dedicated to public art, in accordance with 4.4.a.iv of the Official Plan
- Tendering for construction of the Square and new building

## WINTER 2020

- Commence construction of new building and laneway connection

## FALL 2020

- Commence construction of portions of the Square not being impacted or used for staging for construction of new building
- Completion of laneway connection completed

## FALL 2021

- Construction completion for both the Square and new building



# Thank you

The Planning Partnership

